

GD/24 15 4D

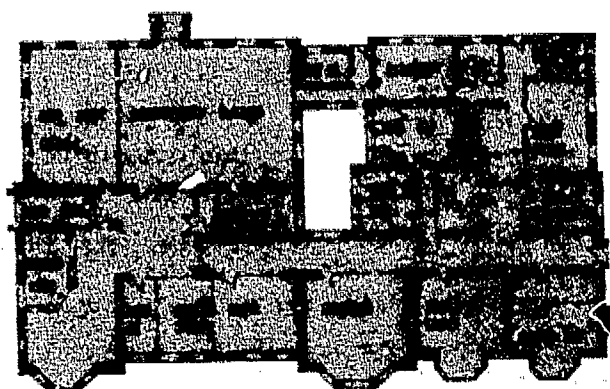
BARR'S HILL C.S. & C.C.

DEPARTMENT OF ARCHITECTURE & PLANNING, COUNCIL OFFICES, COUNTY, HARRY HULL DA 77 48 18 8 W.R.P. CITY ARCHITECT AND PLANNING OFFICER, JULY 1975

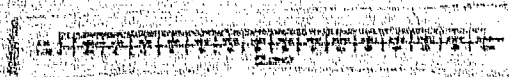
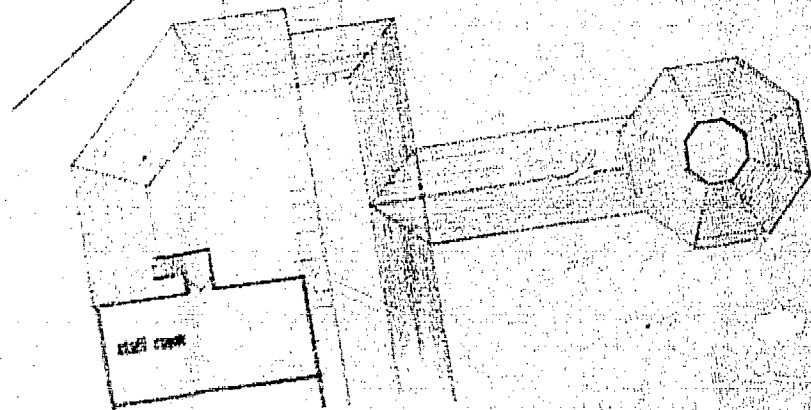
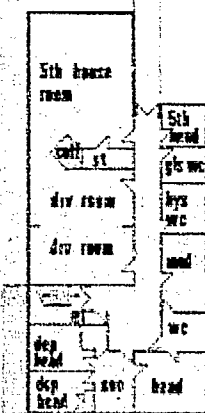
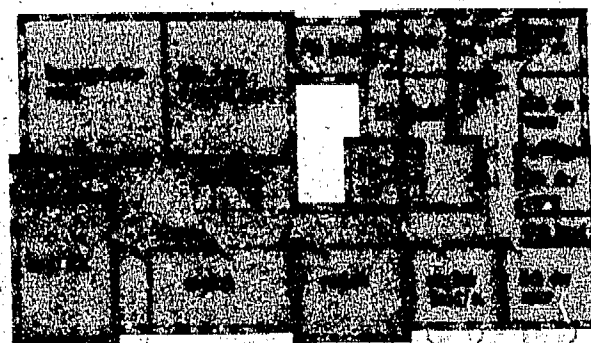
LEVEL 4-5

DRAWING NUMBER 1/0145/2.3 SCALE 1:100

LEVEL 4



LEVEL 5



DESPATCHED 21 APR 75

APPROVED

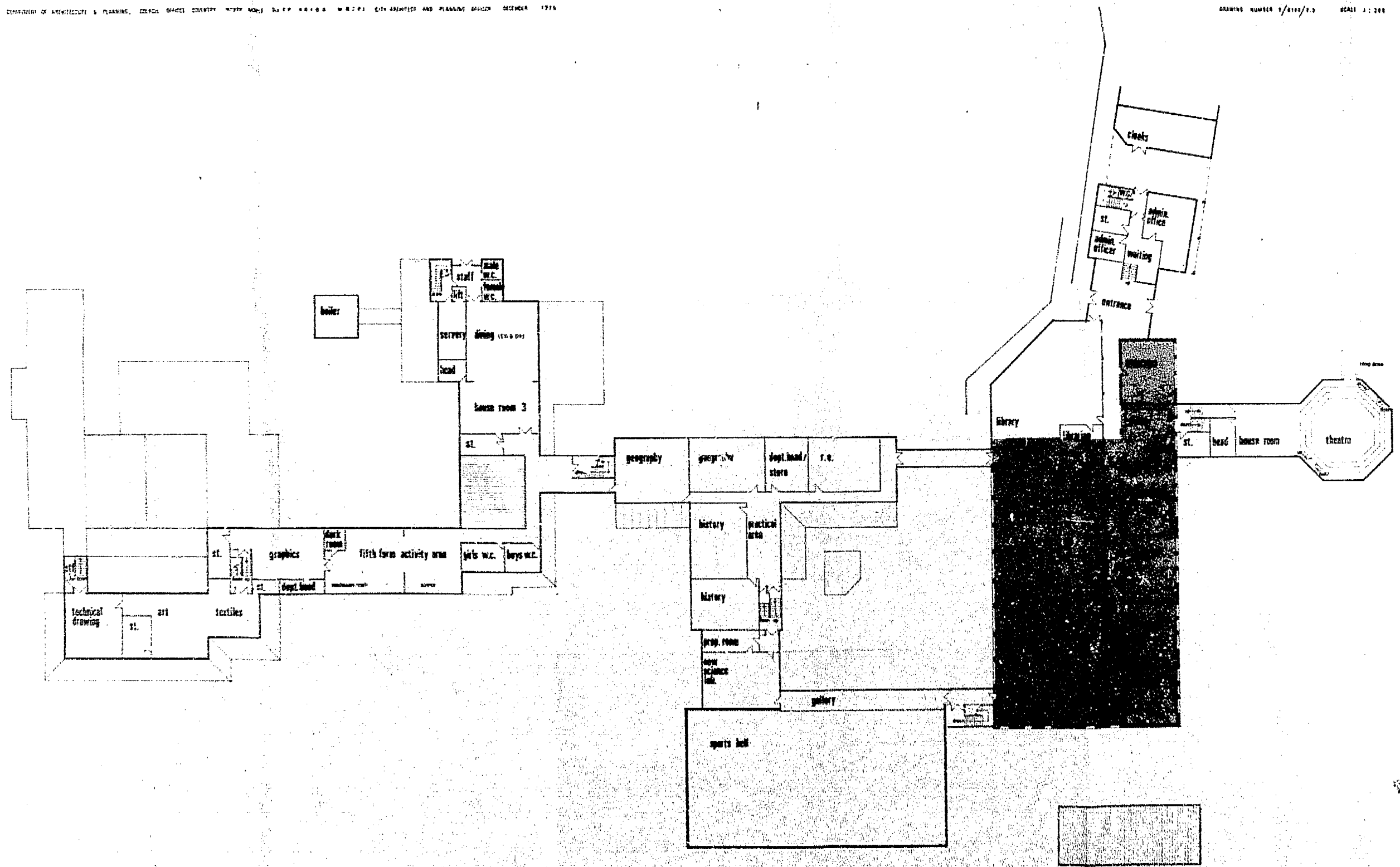
GPI 24 154 D

BARR'S HILL C.S. & C.C.

LEVEL 3

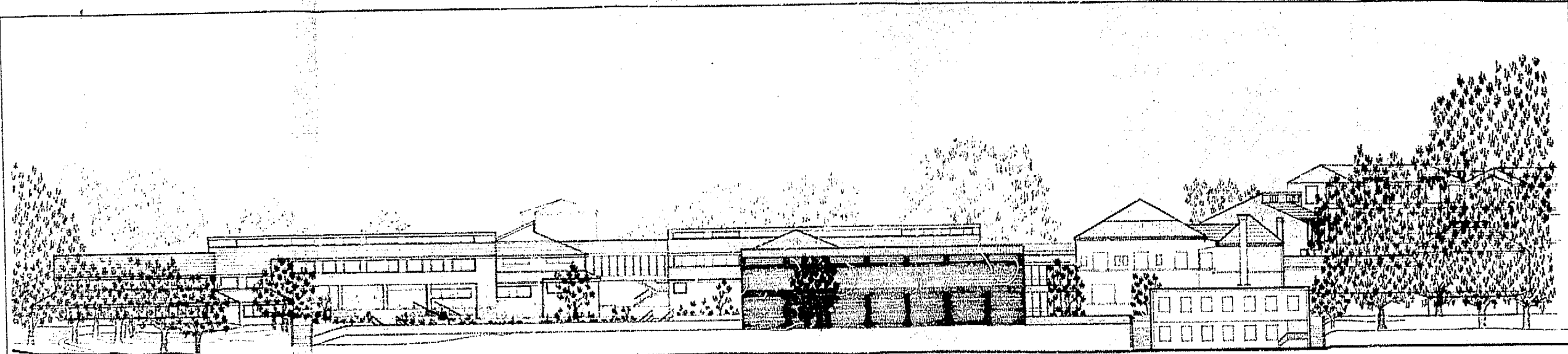
DEPARTMENT OF ARCHITECTURE & PLANNING, COLLEGE OFFICES, COUNTRY HERRY ROAD, DU PONT ARMS, W.V. CITY PLANNING AND PLANNING OFFICE, DECEMBER 1976

DRAWING NUMBER 1/2110/1.3 SCALE 1:200

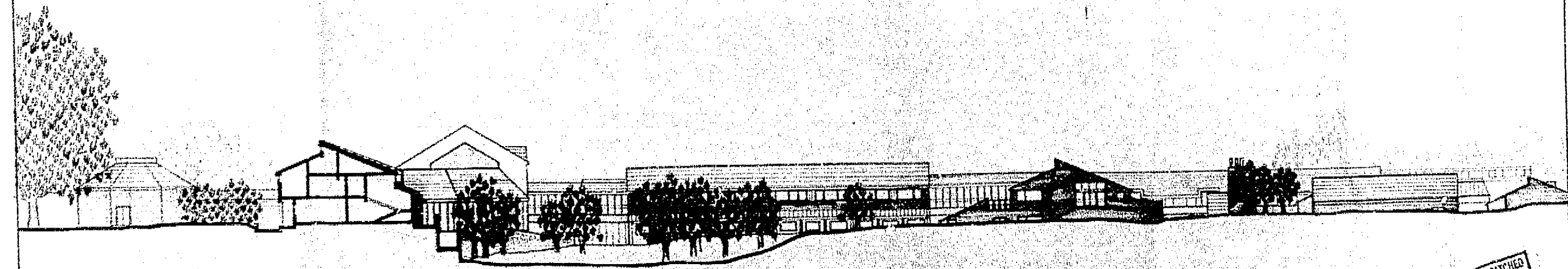


DESPATCHED
24 APR 1976
APPROVED

GD12:154D



SECTION 1-1



SECTION 2-2

DESIGNED
27/12/1976
APPROVED

BARR'S HILL C.S. & C.C.

SITE SECTIONS

DEPARTMENT OF ARCHITECTURE & PLANNING, COUNTY OFFICE, COUNTY, ALBANY 1976. ON THE BASIS OF THE SITE PLANNING OFFICE. SCALE 1:1000



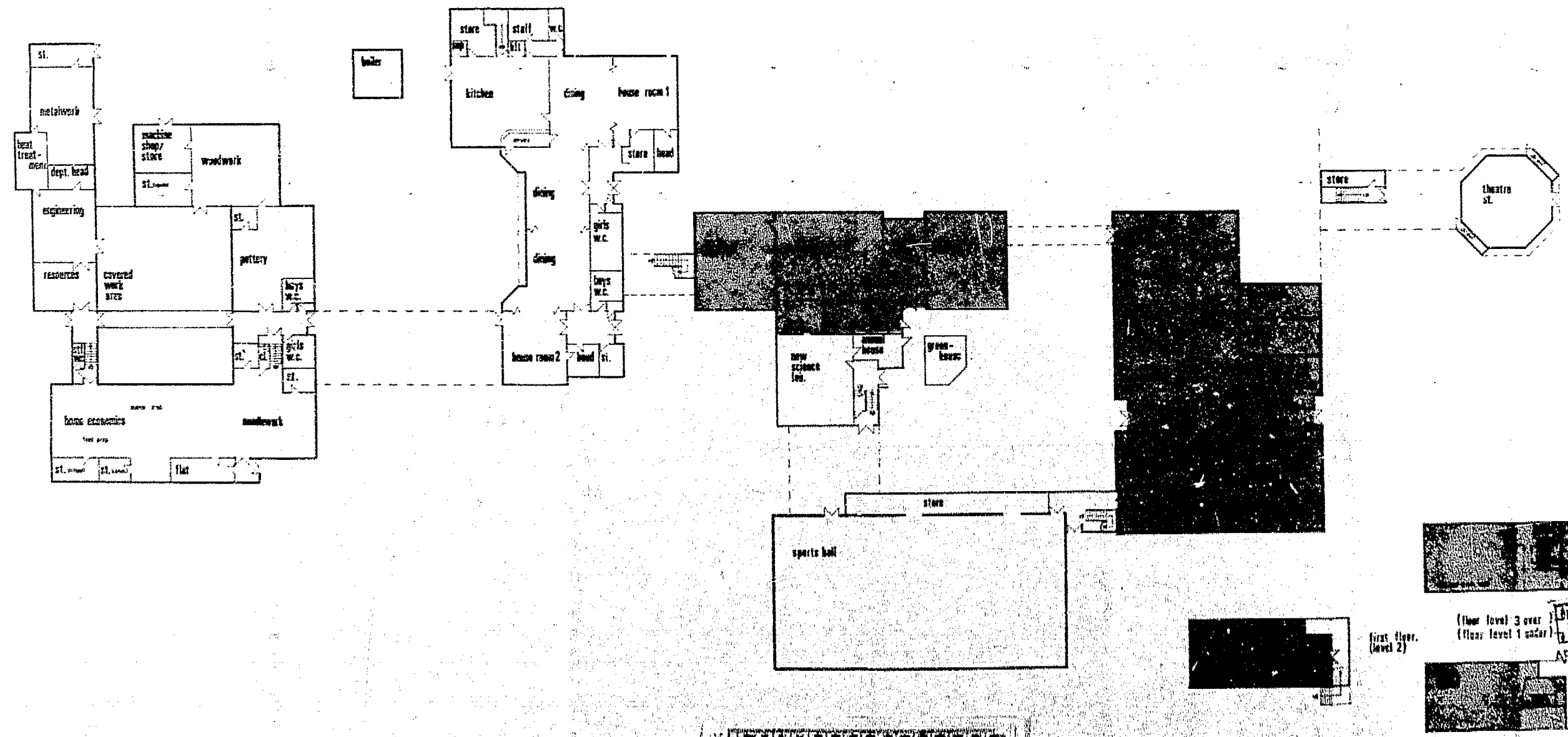
SCALE 1:1000

BARR'S HILL C.S. & C.C.

DEPARTMENT OF ARCHITECTURE & PLANNING, COUNCIL OFFICES, COUNTY, HARTY MOBLE DR TP, BARRA W.B.P.P. CITY ARCHITECT AND PLANNING OFFICE, 12/19/1971

LEVEL 1-2

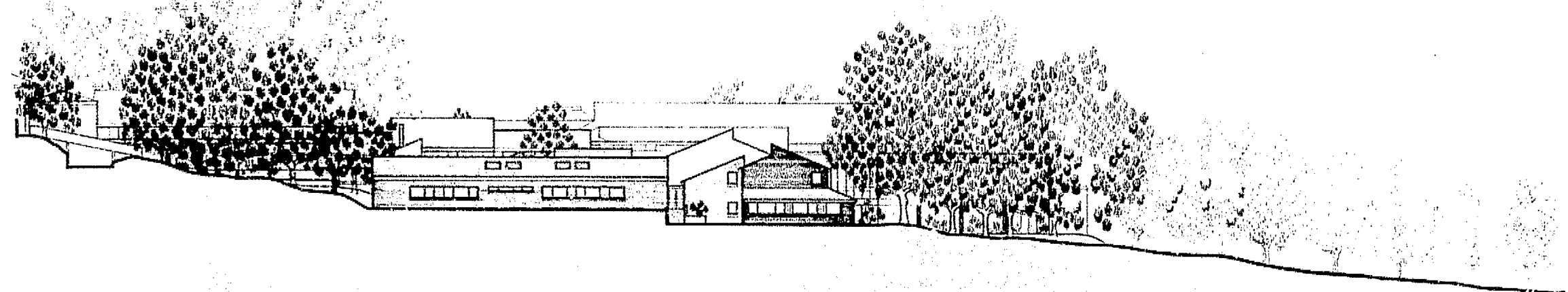
DRAWING NUMBER 1/4145/2.1 SCALE 1:200



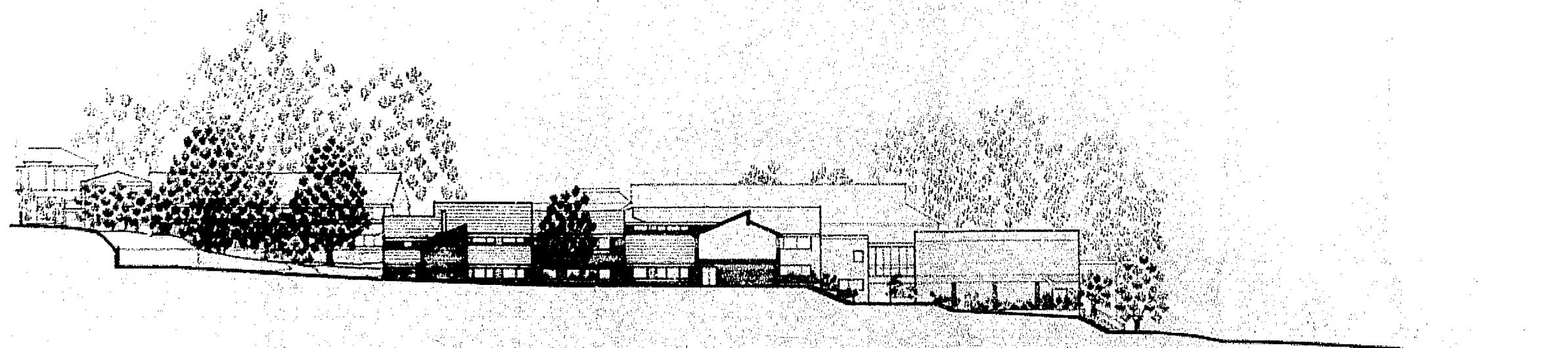
DESPATCHED 21 APR 72 APPROVED

DESPATCHED 21 APR 72 APPROVED
First floor. (level 2)
(floor level 3 over)
(floor level 1 under)

GD 241549

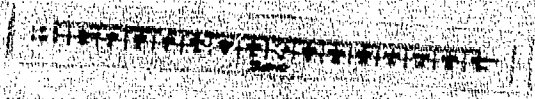


SECTION 5-5



SECTION 6-6

BARR'S HILL C.S. & C.C.



SITE SECTIONS

DESIGNED
21 APR 1938
APPROVED