

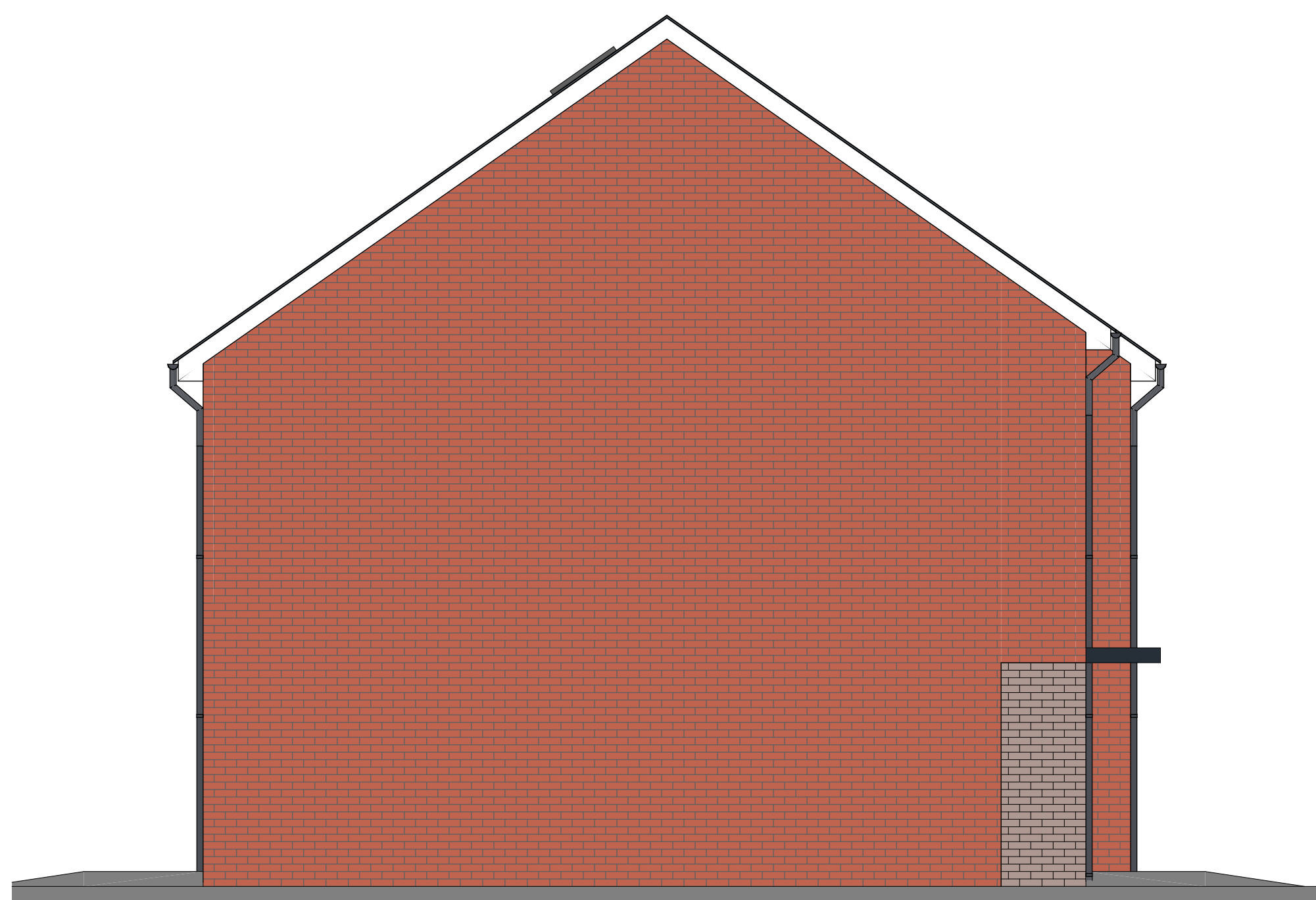
# FOR PLANNING

## Materials Schedule

- Brickwork - red with grey feature panels, similar to bricks used at the Gateway, Adelaide Street.
- Roof tiles - Dark grey concrete interlocking.
- Fascia, soffit & barge board - White uPVC
- Rain water goods - grey uPVC
- Windows and doors - Dark grey uPVC



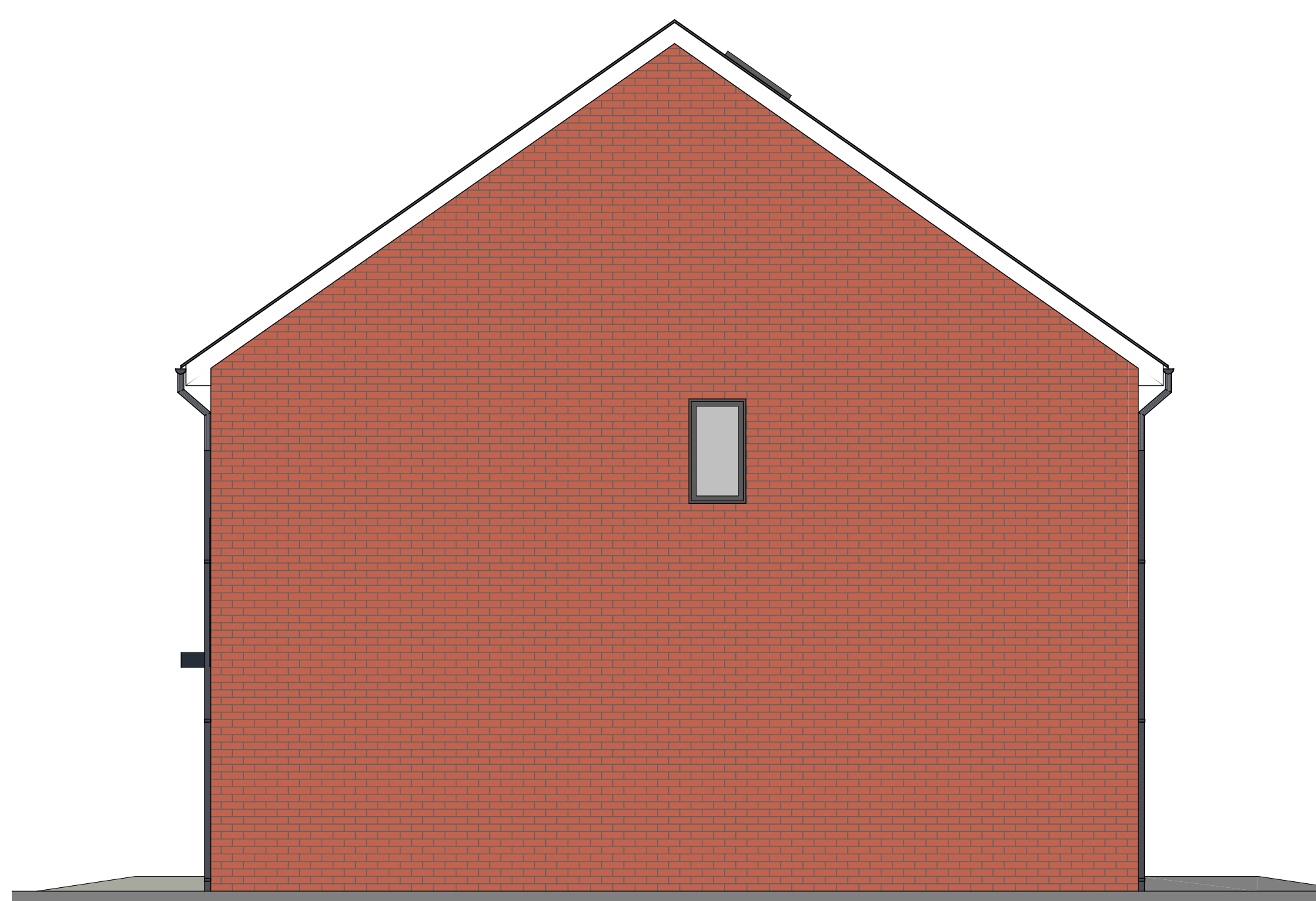
Front Elevation  
2B4P A Type House, Plots 1 - 3



Side Elevation  
2B4P A Type House, Plot 3

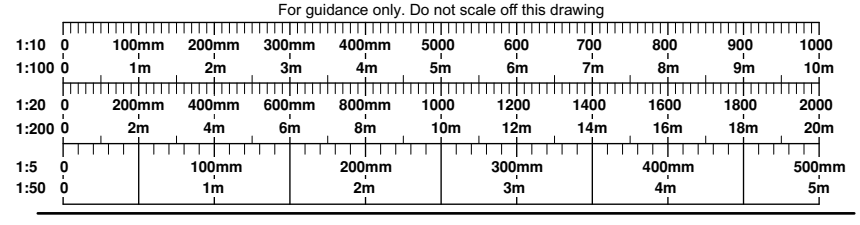


Rear Elevation  
2B4P House Type, Plots 1 - 3



Side Elevation  
2B4P A Type House, Plot 1

Rev.	Date	Description	Drawn	Check
A	27.08.19	A Type House note added and reference to Plots 10 & 11 removed. Bwk eaves and verge removed and fascia and barge board added. Rooflights added. Materials schedule added and drawing shown For Planning	LB	TH



**wm housing group**

**WALKER TROUP ARCHITECTS**

52 Lyndon Road  
Sutton Coldfield  
West Midlands B73 6BS  
t: 0121 355 4040  
e: arch@walkertroup.co.uk

Contract  
FORMER WILLIAM THOMPSON HOUSE /  
SACKVILLE HOUSE CLIFTON ST COVENTRY  
CV1 5GR

Sheet Title  
2B4P A Type House Elevations.  
Plots 1 - 3

Client  
WM HOUSING GROUP

Scale  
1:50 @ A1

Date  
JULY 2019

Drawn By  
L. Bradley

Checked By  
J. Ward

Drawing Number  
1542-06-201 A