

FOR PLANNING

Materials Schedule

Brickwork - red with grey feature panels, similar to bricks used at the Gateway, Adelaide Street.

Roof tiles - Dark grey concrete interlocking.

Fascia, soffit & barge board - White uPVC

Rain water goods - grey uPVC

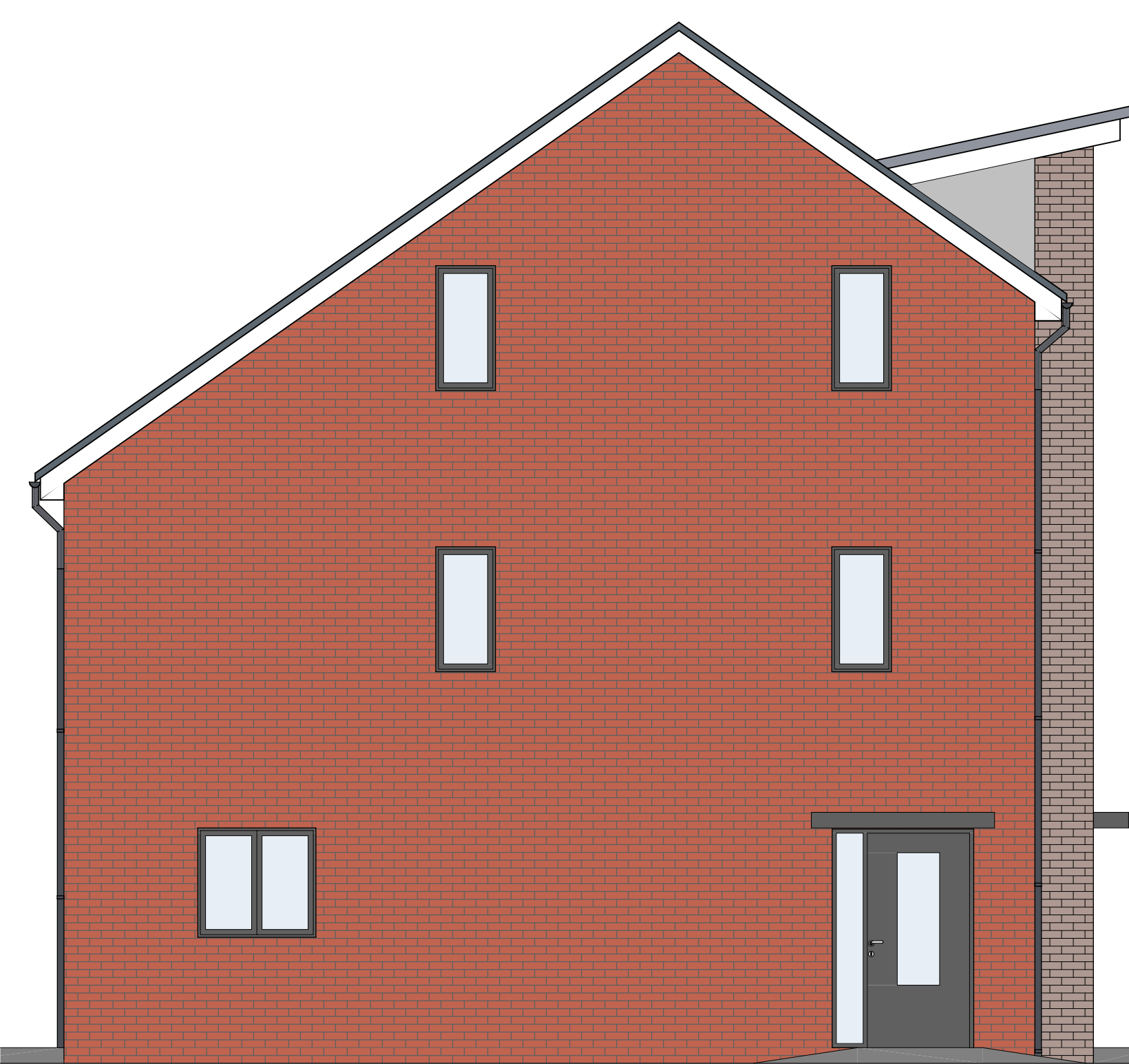
Windows and doors - Dark grey uPVC.
Square window to second floor to be 'look alike' glass with insulation and plasterboard internally.



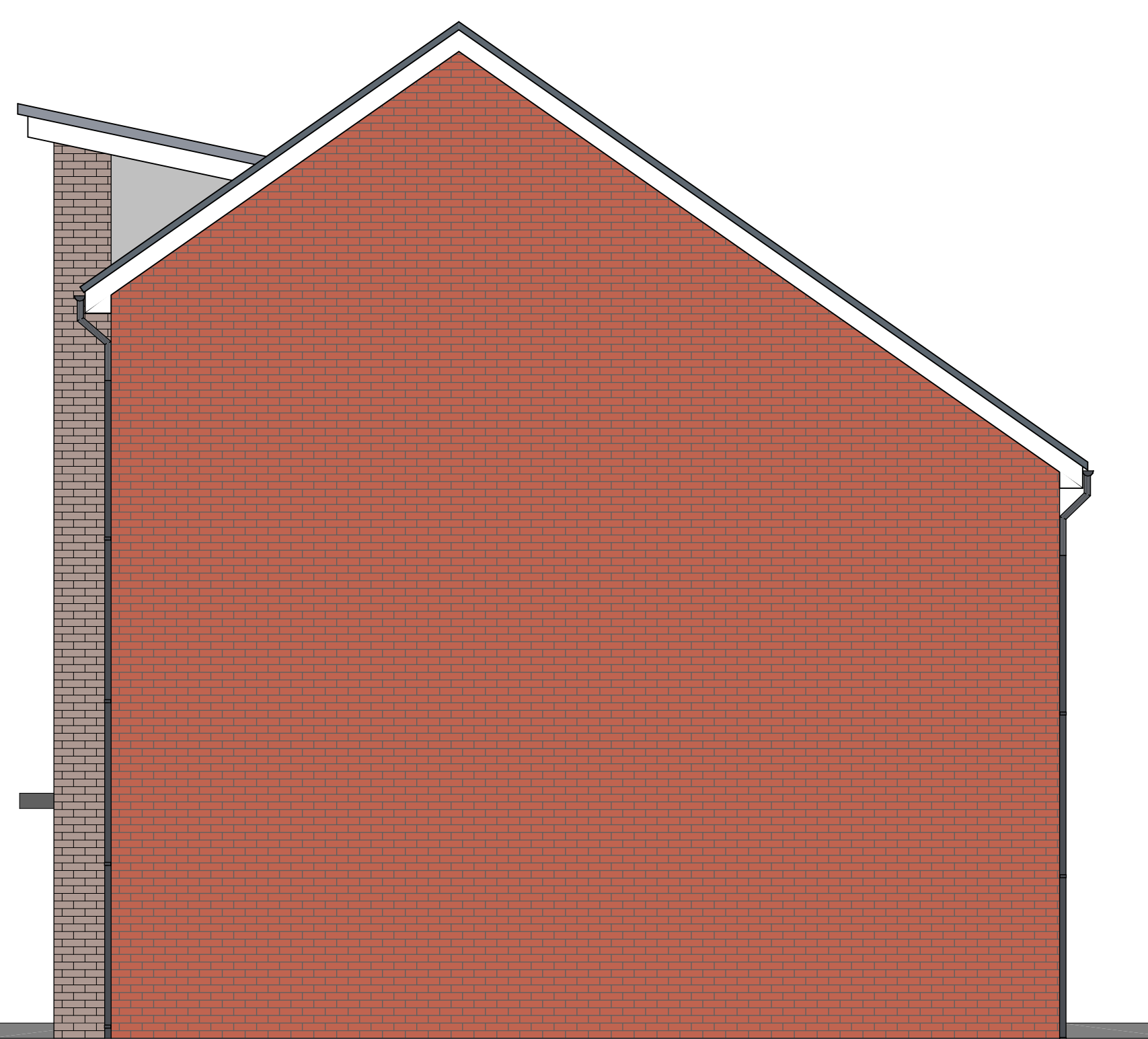
Front Elevation
3B5P B & B1 Type House, Plots 4 - 7



Rear Elevation
3B5P B & B1 Type House, Plots 4 - 7

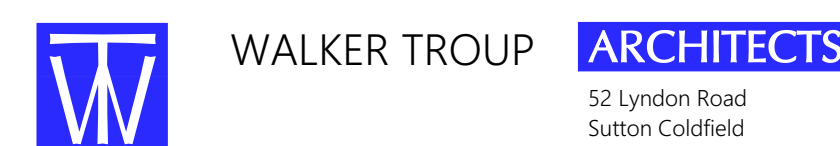
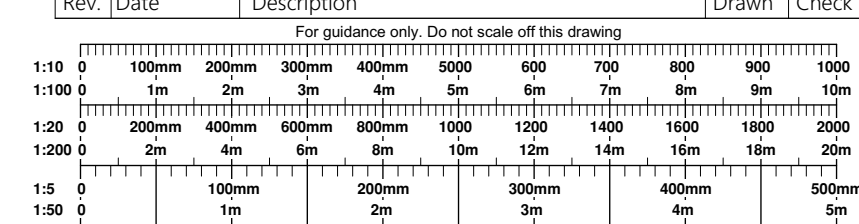


Entrance/Side Elevation
3B5P B1 Type House, Plot 4



Side Elevation
Plot 7

Rev.	Date	Description	Drawn	Check
A	27.08.19	B & B1 Type House note added. Bwk eaves and verge removed and fascia and barge board added. Materials schedule added and drawing shown For Planning	LB	TH



WALKER TROUP ARCHITECTS
52 Lyndon Road
Sutton Coldfield
West Midlands B73 6BS
t: 0121 355 4040
e: arch@walkertroup.co.uk

Contract
FORMER WILLIAM THOMPSON HOUSE /
SACKVILLE HOUSE CLIFTON ST COVENTRY
CV1 5GR

Sheet Title
TYPE B & B1 3B5P 2.5 STOREY HOUSE TYPE
PLOTS 4-7 ELEVATIONS

Client
WM HOUSING GROUP

Scale
1:50 @ A1

Drawn By
Checked By

Drawing Number
1542-06-203 A