

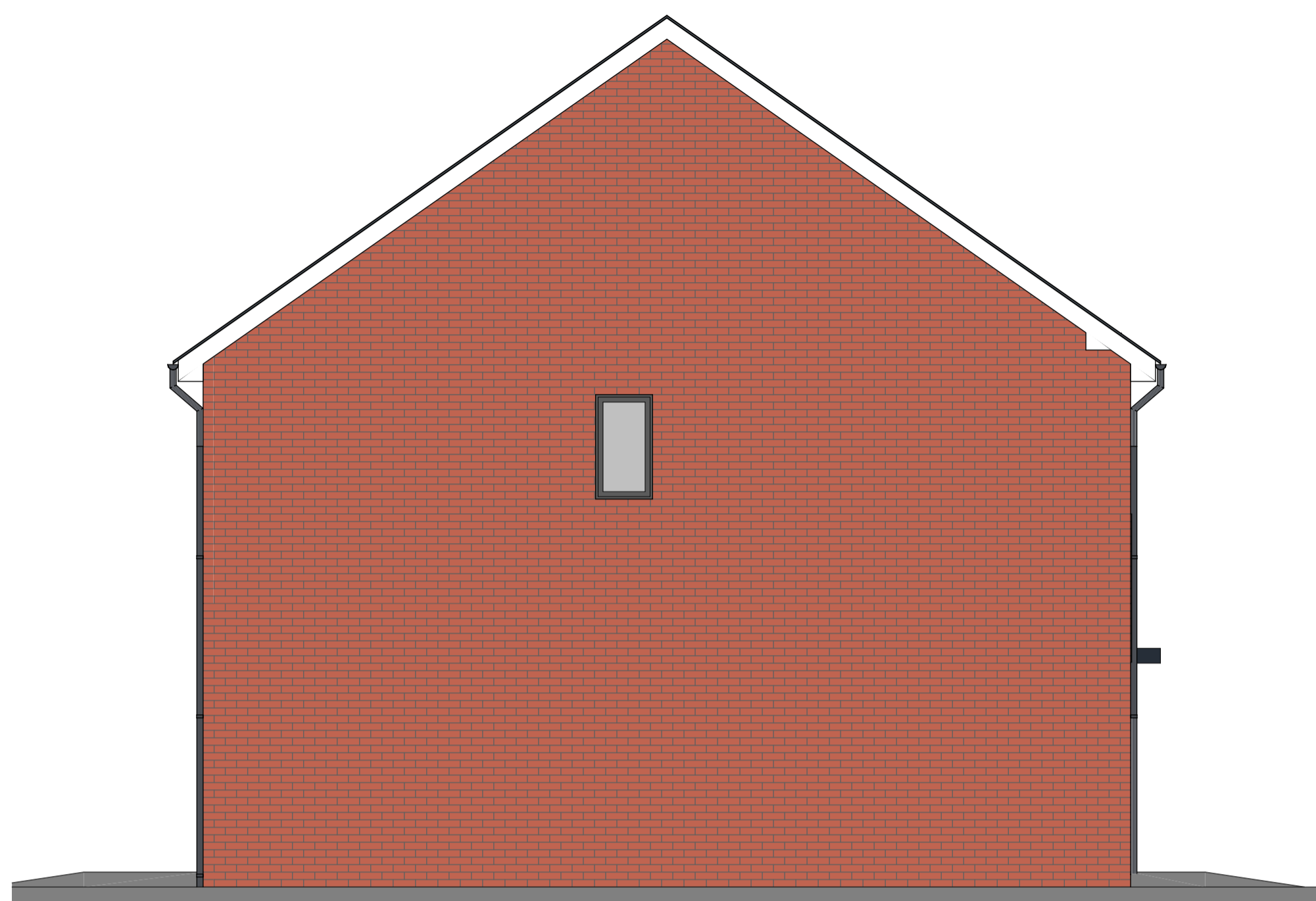
FOR PLANNING

Materials Schedule

- Brickwork - red with grey feature panels, similar to bricks used at the Gateway, Adelaide Street.
- Roof tiles - Dark grey concrete interlocking.
- Fascia, soffit & barge board - White uPVC
- Rain water goods - grey uPVC
- Windows and doors - Dark grey uPVC



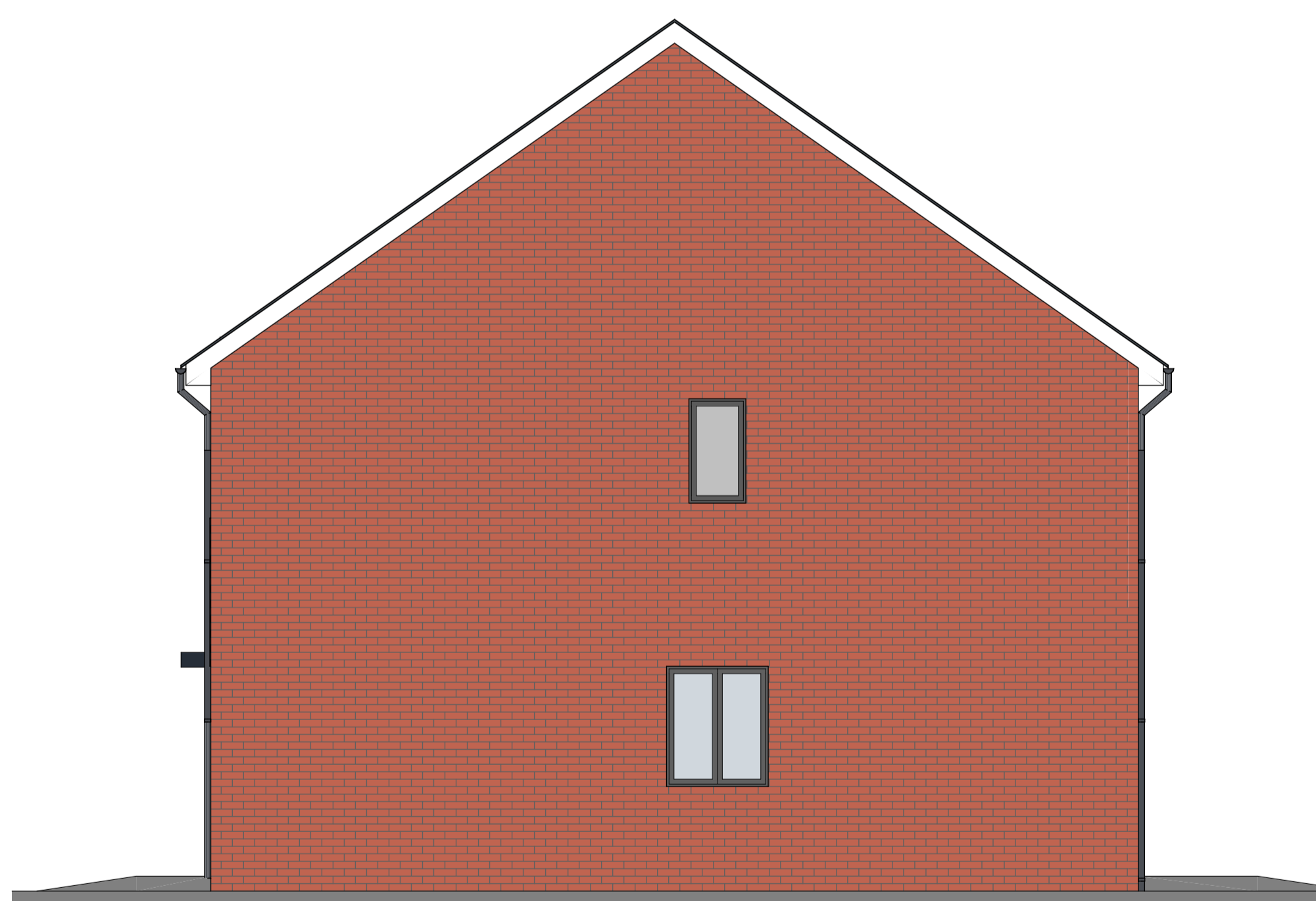
Front Elevation
2B4P A & A1 Type House, Plots 10 - 11



Side Elevation
2B4P A Type House, Plot 10



Rear Elevation
2B4P A & A1 Type House, Plots 10 - 11



Side Elevation
2B4P A1 Type House, Plot 11

Rev.	Date	Description	Drawn	Check

For guidance only. Do not scale off this drawing.

WALKER TROUP ARCHITECTS
52 Lyndon Road
Sutton Coldfield
West Midlands B73 6BS
t: 0121 355 4040
e: arch@walkertroup.co.uk

Contract	
FORMER WILLIAM THOMPSON HOUSE / SACKVILLE HOUSE CLIFTON ST COVENTRY CV1 5GR	
Sheet Title	
2B4P A Type House Elevations. Plots 10 - 11	
Client	
WM HOUSING GROUP	
Scale	Date
1:50 @ A1	JULY 2019
Drawn By	Checked By
L. Bradley	J. Ward
Drawing Number	
1542-06-209	