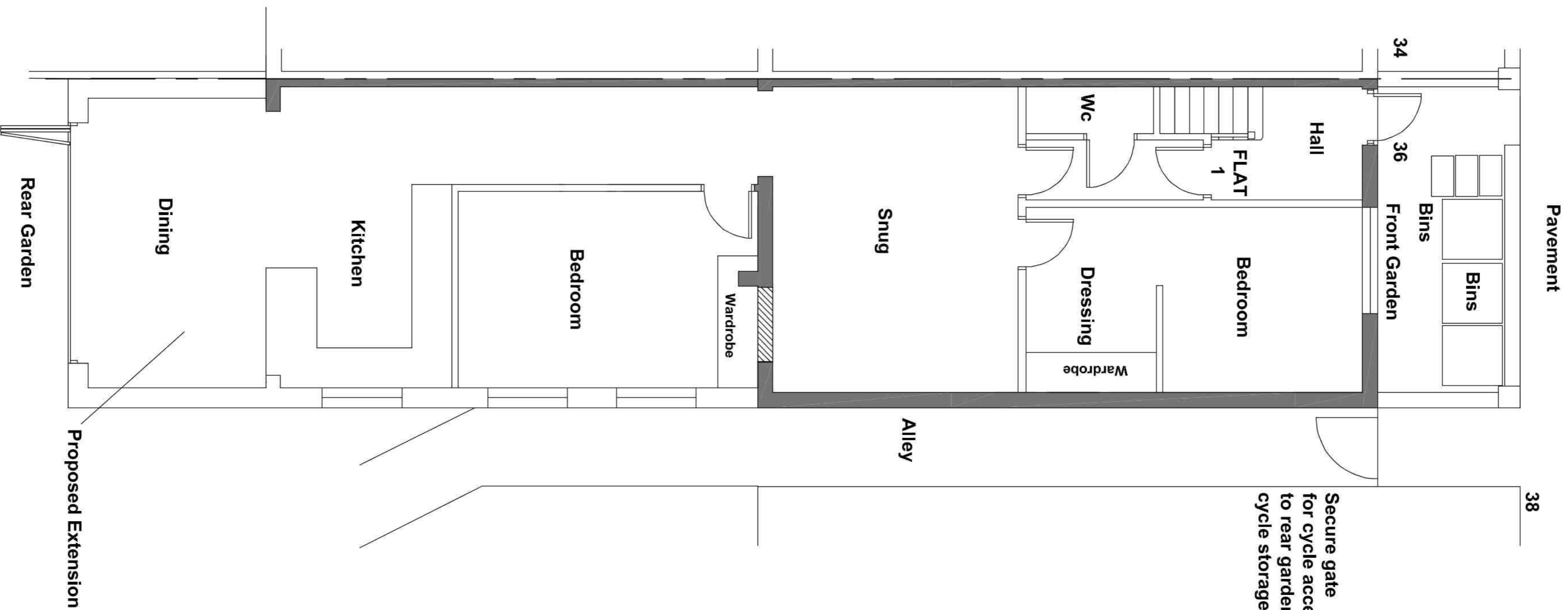
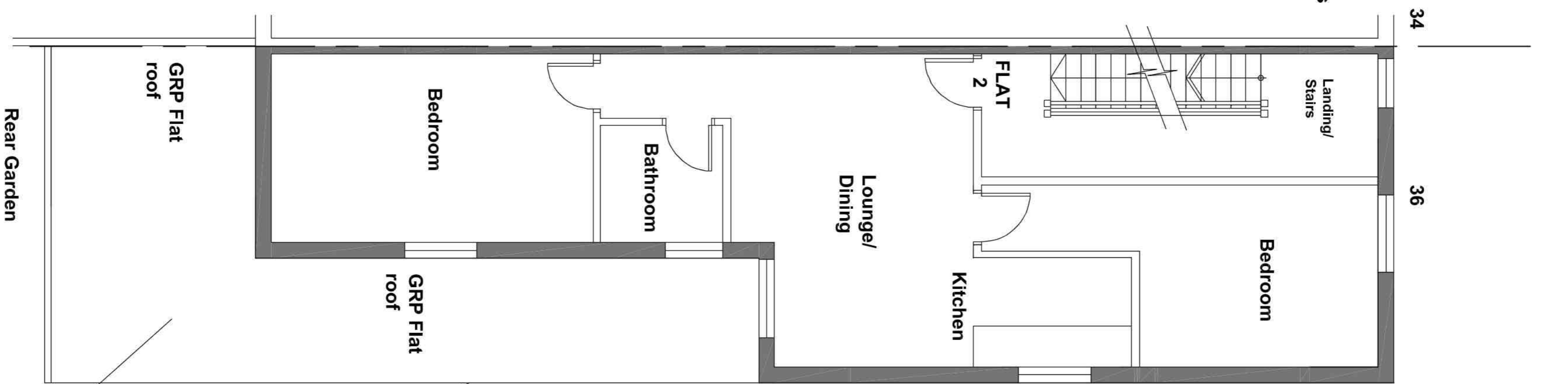


Car parking to be in street with 1 space immediately outside of house

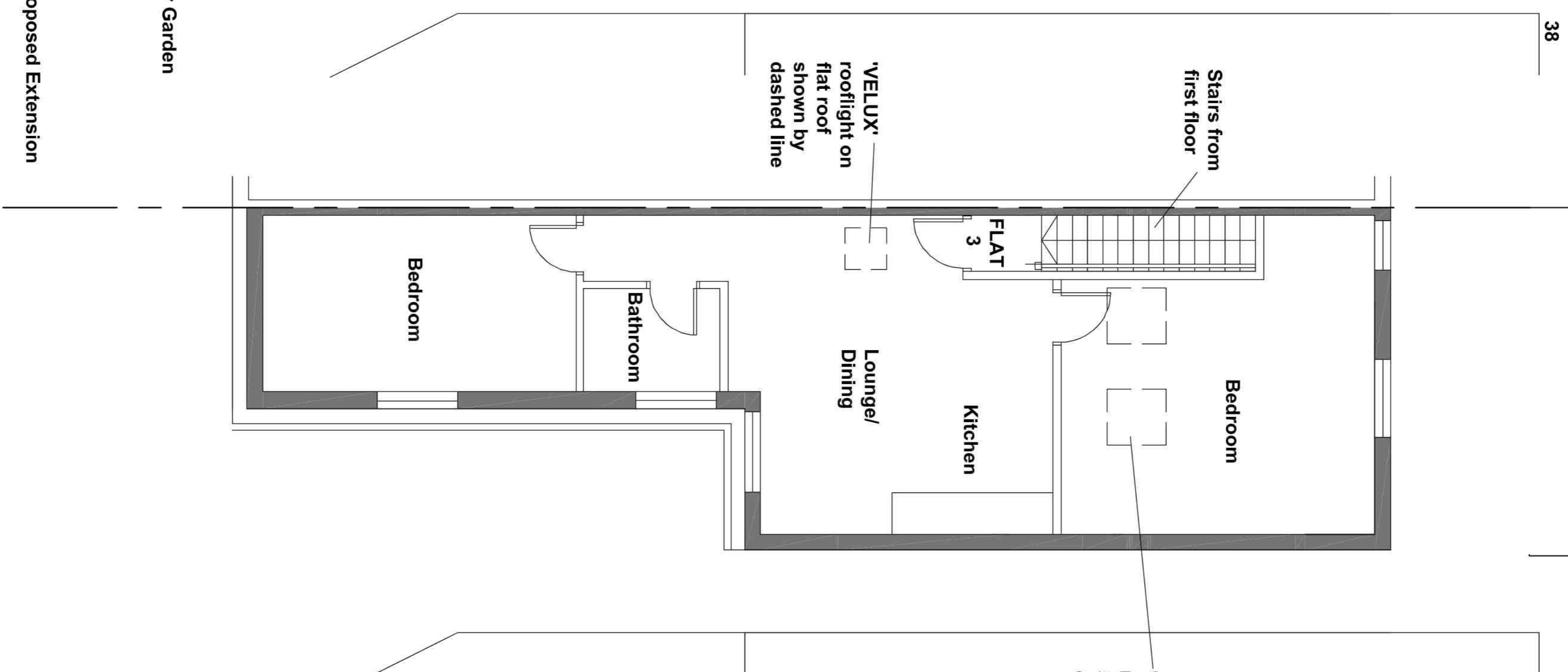
Grantham Street



Proposed Ground Floor Plan
Scale 1:50 @ A1

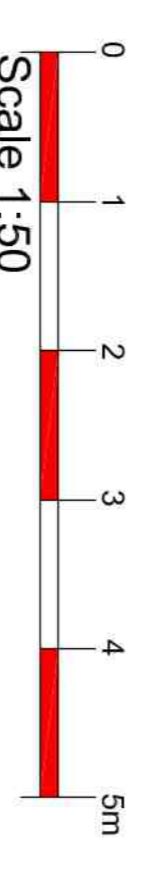


Proposed First Floor Plan
Scale 1:50 @ A1



Proposed Attic Plan
Scale 1:50 @ A1

GENERAL NOTES
DRAWING CAN BE SCALED FOR PLANNING PURPOSES ONLY BUT IF IN ANY DOUBT ABOUT A PERSON OR AN ACT OF THE DRAWING INFORMATION PLEASE ASK CDRB ARCHITECTS LTD.



PLANNING SUBMISSION

Rev	Description	By	Date
B	Attic plan added	cdrb	13.8.19
A	12.8.19 Bins indicated following feedback from planning	cdrb	12.8.19
Rev	Drawn	By	Date
		cdrb	13.8.19



cdrb architects ltd
9 Alton Court Road,
Coventry, CV8 1LD

Job title
Proposed Change of Use from C3 to 3 No Flats at 36 Grantham Street, Coventry

Drawing title
Proposed Ground, First and Attic Plans

Scale	drawn by	date	checked by
1:50 @ A1	PA	September 2019	CDRB
Rev no.	drawing no.	revision	
T1796	AL/P/04	B	