

(C) This drawing is copyright. DO NOT SCALE FROM THIS DRAWING. Dimensions to be checked on site prior to work being carried out. This drawing is for the purpose of submitting a building regulations application only and it is to be read in conjunction with all other drawings and information in connection with the scheme. Any discrepancies to be reported to Callingham Associates Limited in writing prior to works proceeding. No unauthorised copying or reproducing of this drawing without prior written permission from Callingham Associates Limited

DRAWINGS NOT TO BE SCALED. ALL DIMENSIONS AND LEVELS TO BE CHECKED ON SITE BY THE CONTRACTOR. ALL DRAWINGS TO BE READ TOGETHER AND IN CONJUNCTION WITH ENGINEERING DRAWINGS, DETAILS AND CALCULATIONS.

SMOKE DETECTION
 (SD) Smoke detectors to be provided in positions shown.
 A self contained smoke alarm is to be fitted to each area as required by the Fire Officer, and interconnected. If ceiling mounted it is to be at least 300mm from any wall or light unit. If wall mounted it is to be fixed between 150 and 300mm below the ceiling. The smoke alarm is not to be located immediately above a stair shaft so that easy access is available to the unit. ALL TO BS5839 PT 6: 2004
 Alarms to be mains operated and self contained conforming to BS5446 Part 1 1998 and fitted in accordance with current I.E.E. Regulations.
 CO Carbon Monoxide detector fitted in rooms with a boiler
 HD Heat Detectors fitted in kitchen
 All smoke alarms to be permanently wired to a separately fused circuit at the distribution board with the wiring conforming to IEE regulations.
 Fire fighting and alarm equipment subject to the Fire Officers report and final certification

PRELIMINARY

B	25.07.19	General Amendments	AJB
A	01.07.19	Side Extension Removed	LT

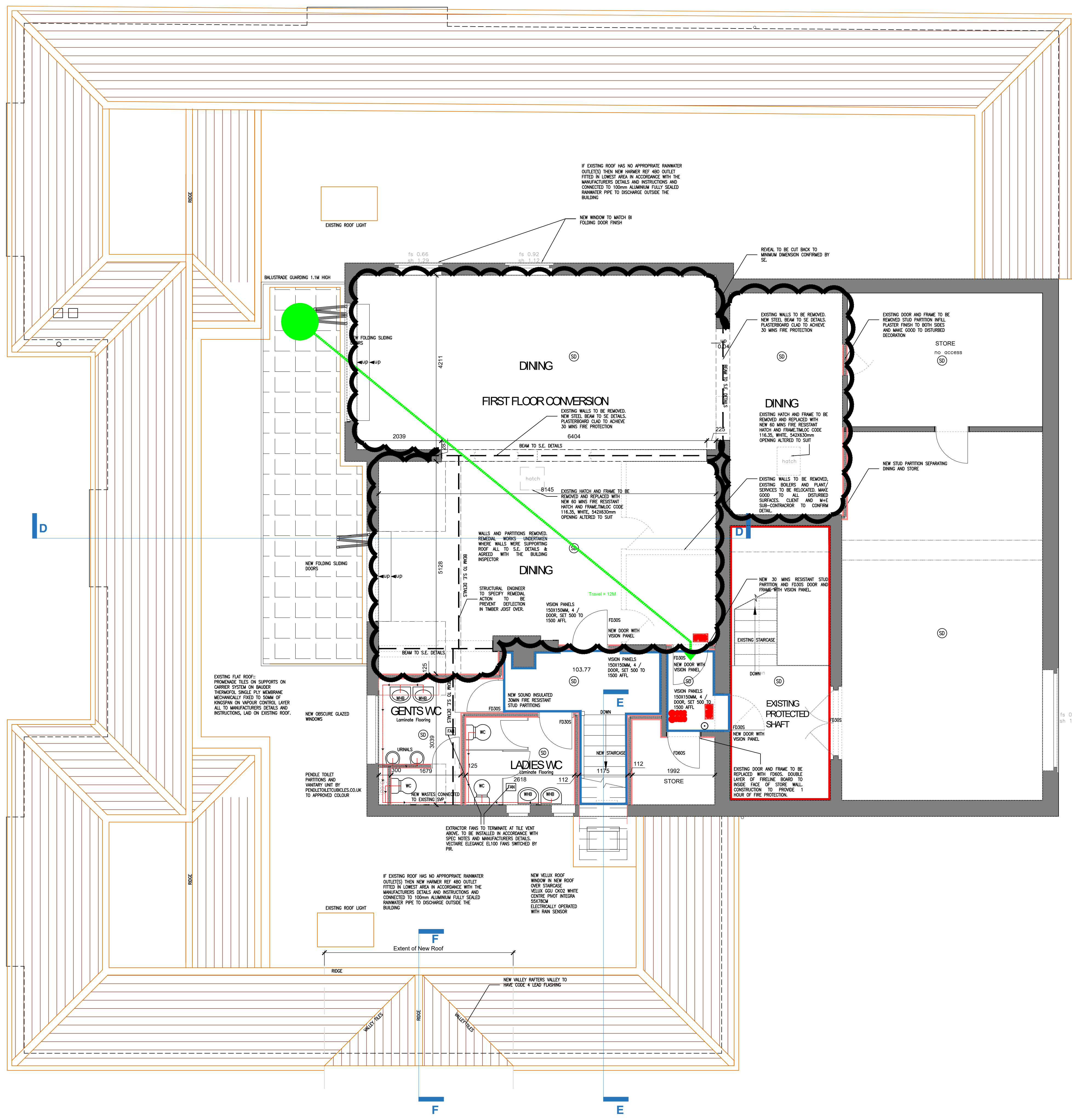


2 Hearsall Lane, Coventry, CV5 6QR, tel: 024 7671 3872
 also at 1 Chapel Street, Warwick, CV34 4HL,
 t: 01926 405595 - f: 01926 405522
 e: architect@callingham-associates.co.uk
 www.callingham-associates.co.uk

PROPOSED EXTENSION TO THE FARMHOUSE PUB EARLSDON COVENTRY CV5 6HB

FIRST FLOOR/ROOF PLAN

scale: 1:50@A1 date: 19.07.19 drawn by: AJB
 drg: 1097.105B checked by: PB



FES DENOTES ILLUMINATE DIRECTIONAL FIRE EXIT SIGN
FE DENOTES FINAL FIRE EXIT
 All services passing through compartment floors to be fire stopped with proprietary fire collars.

POWDER FIRE BLANKET DENOTES 1NO 6KG POWDER EXTINGUISHER & FIRE BLANKET FIXED TO PAINTED INERT BOARD NOT AFFECTED BY CHORINE, WATER OR HUMIDITY, RELEVANT EXTINGUISHER SIGNS TO BE FIXED ABOVE EXTINGUISHER

CO2 H2O DENOTES 1NO 2KG CARBON DIOXIDE AND 1NO. 9 LITRE WATER EXTINGUISHER FIXED TO PAINTED INERT BOARD NOT AFFECTED BY CHORINE, WATER OR HUMIDITY, RELEVANT EXTINGUISHER SIGNS TO BE FIXED ABOVE EXTINGUISHER

GREEN LINE DENOTES TRAVEL DISTANCE & ROUTE TO ESCAPE EXIT

Note: Maximum travel distance in one direction of travel is 15m and with more than one direction of travel is 32m

RED LINE DENOTES 60 MINUTES FIRE PROTECTION

BLUE LINE DENOTES 30 MINUTES FIRE PROTECTION

BREAK GLASS POINT

NOTES:
 Level ingress/egress to all doors.
 Refer to Electrical Engineers (CD) drawings for details of emergency lighting and smoke/heat detectors

Note: Contractor to establish location of existing manholes and drainage upon commencement of the works.
 From the 1st October 2011 Private drains in Public ownership a building over sewer agreement may be required.

