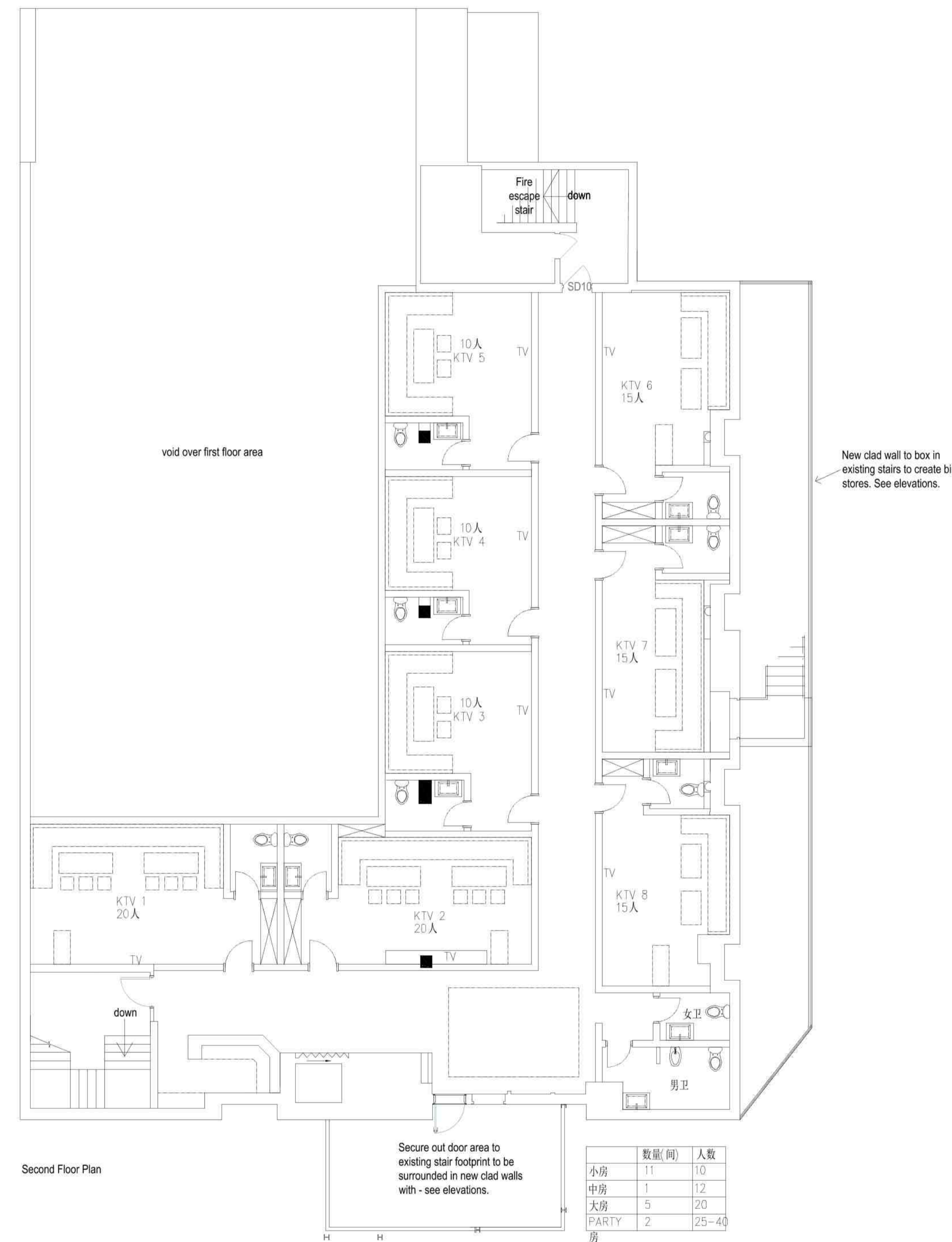
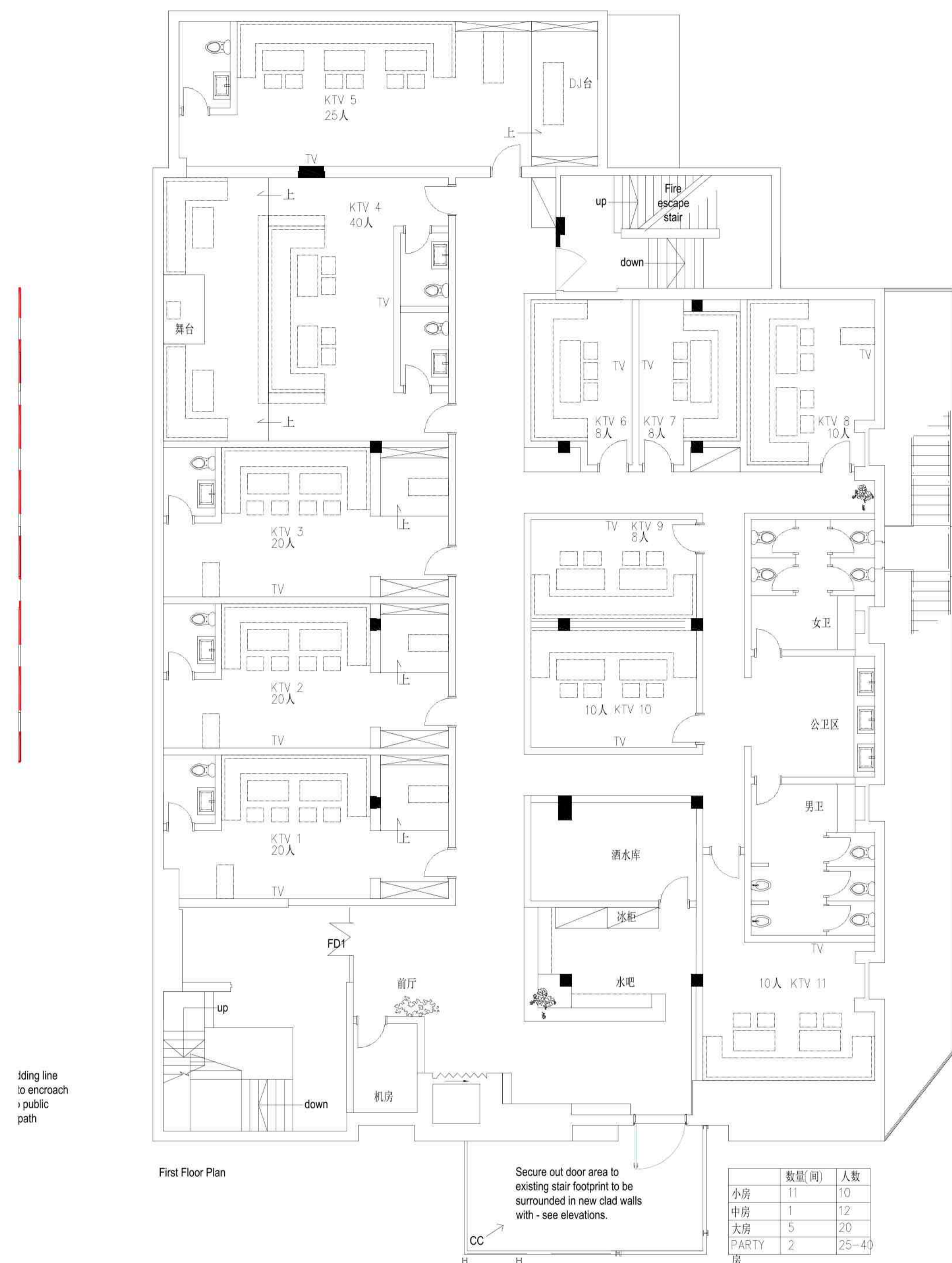


Legend :

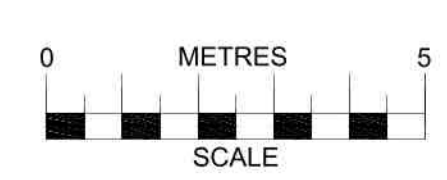
- ATEF Approved type of emergency fastenings
- E Fire Exit sign
- E→ Exit directional sign
- E→ Exit directional boxes
- Emergency lighting points
- 1 Fire extinguisher : water type
Red label
- 2 Fire extinguisher : carbon dioxide type
Black label
- 3 Fire extinguisher : foam type
Cream label
- 4 Fire extinguisher : wet chemical type
Yellow label
- R Refuge
- Fire alarm call points
- DS Automatic smoke detection
- DH Automatic heat detection
- Bx Fire blanket(s)
- ip Fire alarm indicator panel
- 🔔 Audible and visual warning devices
- ← CC CCTV



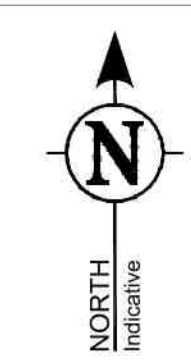
Cladding line to encroach public path

New clad wall to box in existing stairs to create bin stores. See elevations.

Based on survey by others.
Drawing for planning purposes only.
Drawings Copyright © Michael Ramus Architects and not to be passed to any other party without written consent.
All dimensions to be checked on site.
All specialist manufactures (i.e. door, windows, cladding etc) to check all dimensions on site prior to manufacture.
All queries must be brought to the attention of the client/architect prior to manufacture.



Rev.F. 31-5-19 - Cladding line amended
Rev.E. 29-3-19 - Internals amended



Change of Use from current Sui Generis Nightclub to Sui Generis 'E-Sports Bar Entertainment Centre with Karaoke Private Rooms	Proposed First and Second floor plans	1: 100 @ A1	Michael Ramus Architects 76 Priory Road, Kenilworth, Warwickshire, CV8 1LQ 01926 512 400 info@ramus-architects.co.uk
	Players KTV Ltd		
1519-02_F	9th March 2018		