

Proposed West facing elevation to Car Park

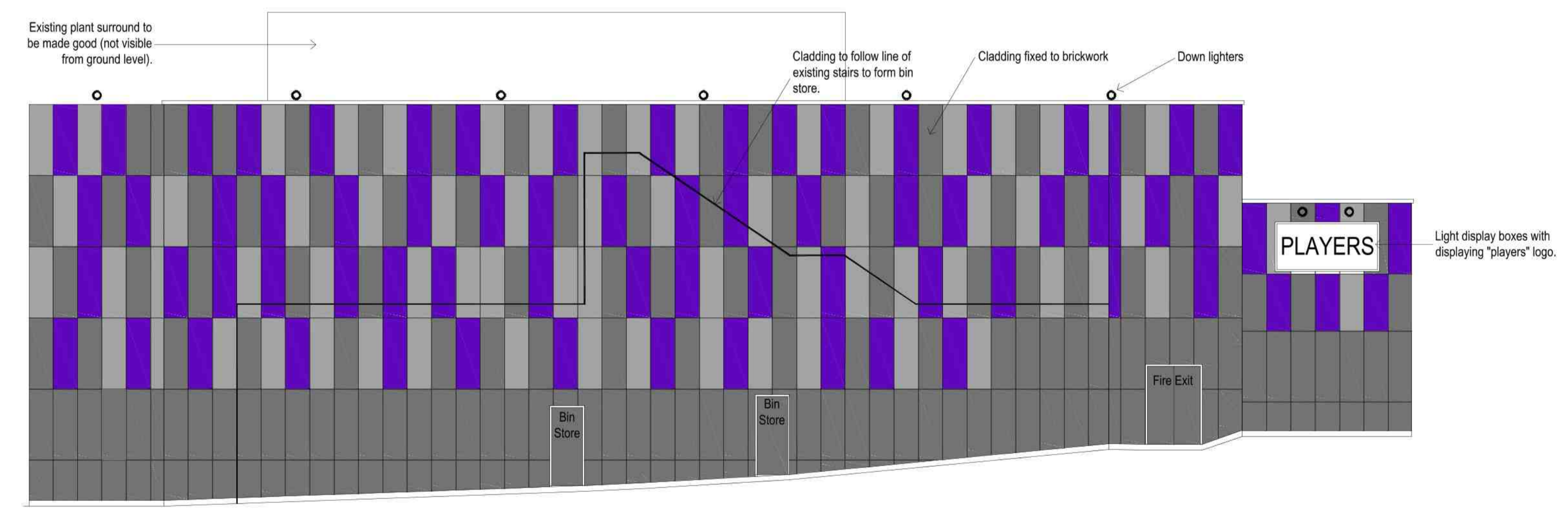
New canopy to match existing with glazed enclosure.

Proposed South facing elevation to Silver Street

New canopy to match existing with glazed enclosure.

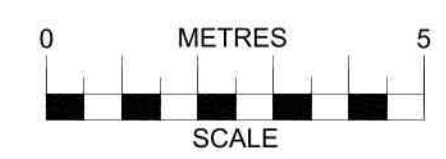


Proposed North facing elevation to Tower Street

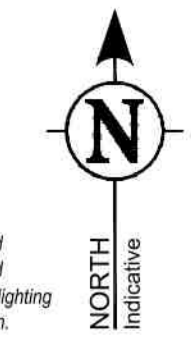


Proposed East facing elevation to Silver Street

Based on survey by others.
Drawing for planning purposes only.
Drawings Copyright © Michael Ramus Architects and not to be passed to any other party without written consent.
All dimensions to be checked on site.
All specialist manufactures (i.e. door, windows, cladding etc) to check all dimensions on site prior to manufacture.
All queries must be brought to the attention of the client/architect prior to manufacture.



Rev.D: 31-5-19 - cladding amended
Rev.C: 29-3-19 - cladding amended
Rev.B: 23-10-18 - letters and downlighting removed from West facing elevation.



Change of Use from current Sui Generis Nightclub to Sui Generis 'E-Sports Bar Entertainment Centre with Karaoke Private Rooms	Proposed Elevations OPTION 1	Michael Ramus Architects 76 Priory Road, Kenilworth, Warwickshire, CV8 1LQ 01926 512 400 info@ramus-architects.co.uk
	1: 100 @ A1	
Players KTV Ltd	Planning Change of use	
1519-04_D	Aug 2018	