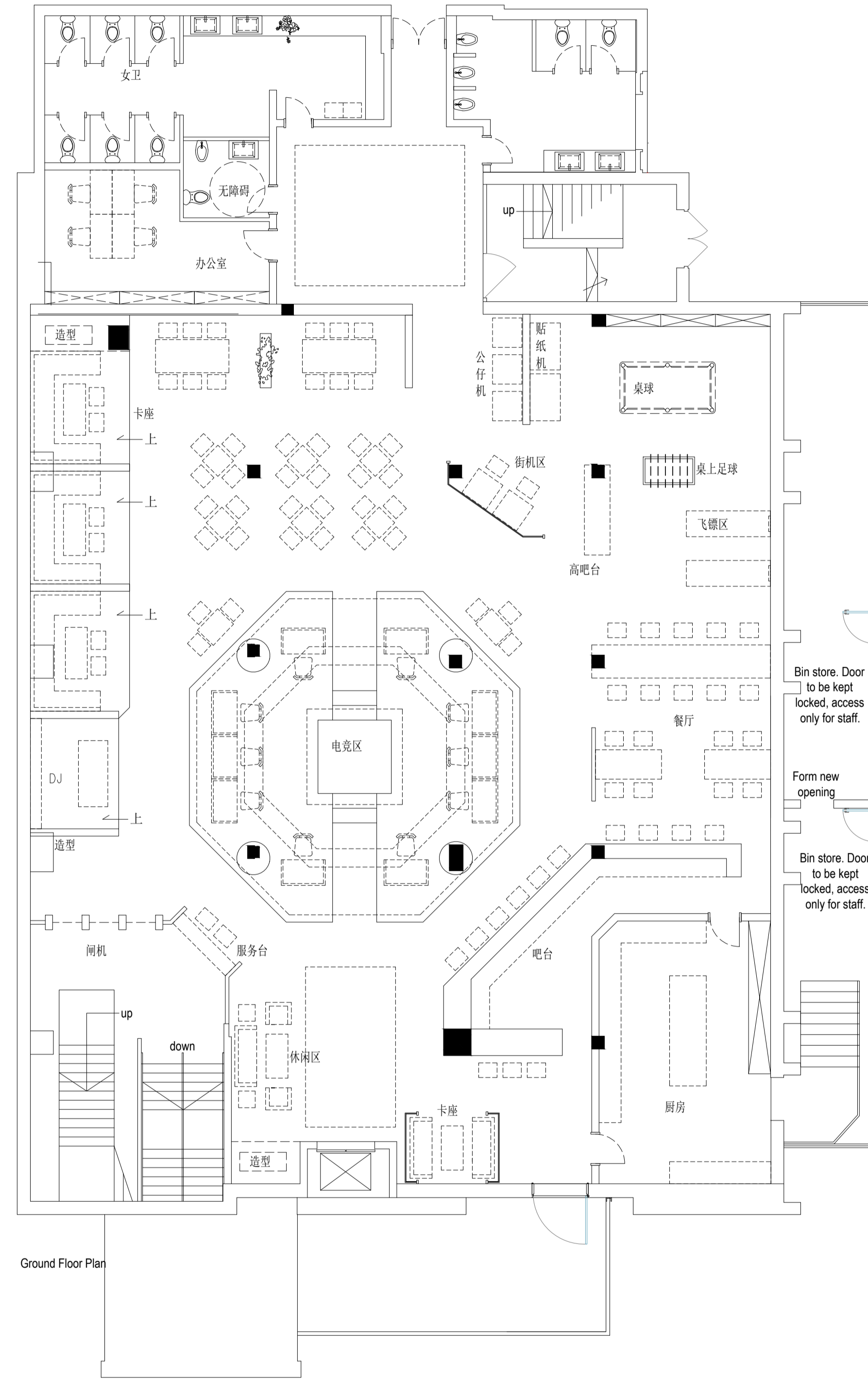


Lower Ground Floor Plan

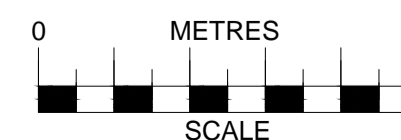


Ground Floor Plan

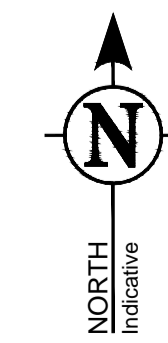
Legend :

- ATEF Approved type of emergency fastenings
- E Fire Exit sign
- E Exit directional sign
- E Exit directional boxes
- Emergency lighting points
- ▽ 1 Fire extinguisher : water type Red label
- ▽ 2 Fire extinguisher : carbon dioxide type Black label
- ▽ 3 Fire extinguisher : foam type Cream label
- ▽ 4 Fire extinguisher : wet chemical type Yellow label
- R Refuge
- Fire alarm call points
- DS Automatic smoke detection
- DH Automatic heat detection
- Bx Fire blanket(s)
- ip Fire alarm indicator panel
- Audible and visual warning devices
- ← CC CCTV

Based on survey by others.
 Drawing for planning purposes only.
 Drawings Copyright © Michael Ramus Architects and not to be passed to any other party without written consent.
 All dimensions to be checked on site.
 All specialist manufactures (i.e. door, windows, cladding etc) to check all dimensions on site prior to manufacture.
 All queries must be brought to the attention of the client/architect prior to manufacture.



Rev.F. 29-3-19 - Internals amended



Change of Use from current Sui Generis Nightclub to Sui Generis 'E-Sports Bar Entertainment Centre with Karaoke Private Rooms	Proposed Basement and Ground floor plans	Michael Ramus Architects 76 Priory Road, Kenilworth, Warwickshire, CV8 1LQ 01926 512 400 info@ramus-architects.co.uk
Players KTV Ltd	Planning Change of use	
1519-01_F	9th March 2018	