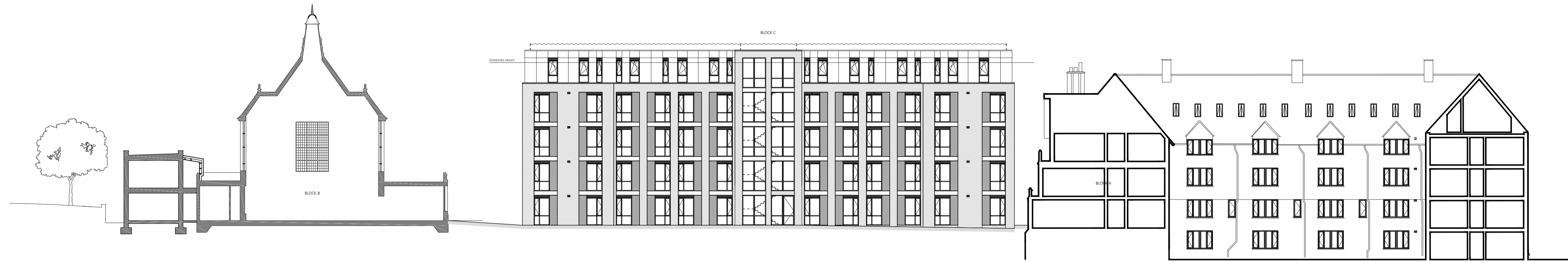


REVISIONS

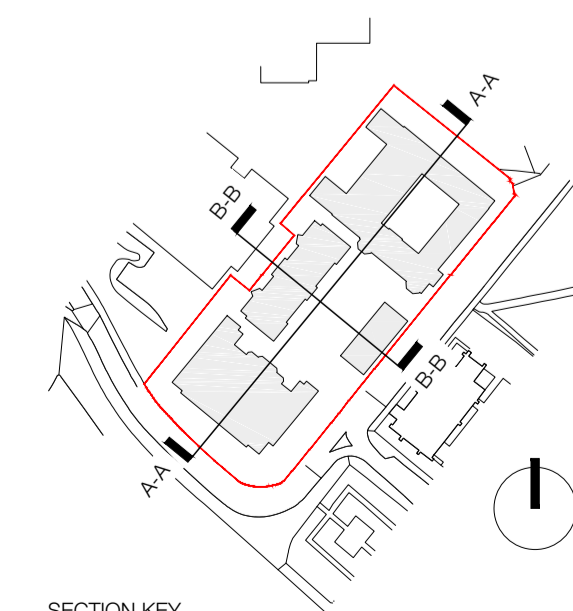
A	16/10/18	ST	SS
Block C floor to floor heights amended. Minor amendments to landscaped amenity area.			
B	01/11/18	JH	UJ
Minor amendments to Block C elevation to reflect increase in floor to floor height, with the school height updated in line with survey.			



SECTION A-A



SECTION B-B



SECTION KEY

NOTE

This drawing is based on the latest structural information received to date. The scheme is subject to design development, and any change to suit the structural scheme will potential have an effect on information shown on these GA's.

This drawing is subject to Local Authority Planning approval. Approved inspectors comments / approvals & associated detail design development.

Door locations and widths shown are based on assumptions to comply with building regulations. No specific client requirements have been shown, and this drawing is subject to the development and incorporation of client requirements.

The location of incoming services are to be fully resolved with the M&E consultant.

This drawing is to be read in conjunction with all relevant Structural, M&E consultant, DLA Landscape drawings & DLA 200 series drawings for GA Plans, Sections, Elevations and Fire Strategies.

FE windows (min 450x450mm all no more than 1100mm above FFL).



ARCHITECTURE

No.55 | St Pauls Street | Leeds | LS1 2TE  
0113 887 3100 www.dla-design.co.uk

PROJECT  
STONEY STANTON ROAD  
COVENTRY

TITLE  
SITE SECTIONS A-A & B-B

SCALE 1:200 @ A1 DATE 30/08/18

DRAWN ST REVIEWED SS

DLA REF 2016-154/G105 NUMBER B REVISION

FILE PATH  
T:\2016\2016-154\CAD\05-Autocad\Drawings\G105

STATUS **For Planning**