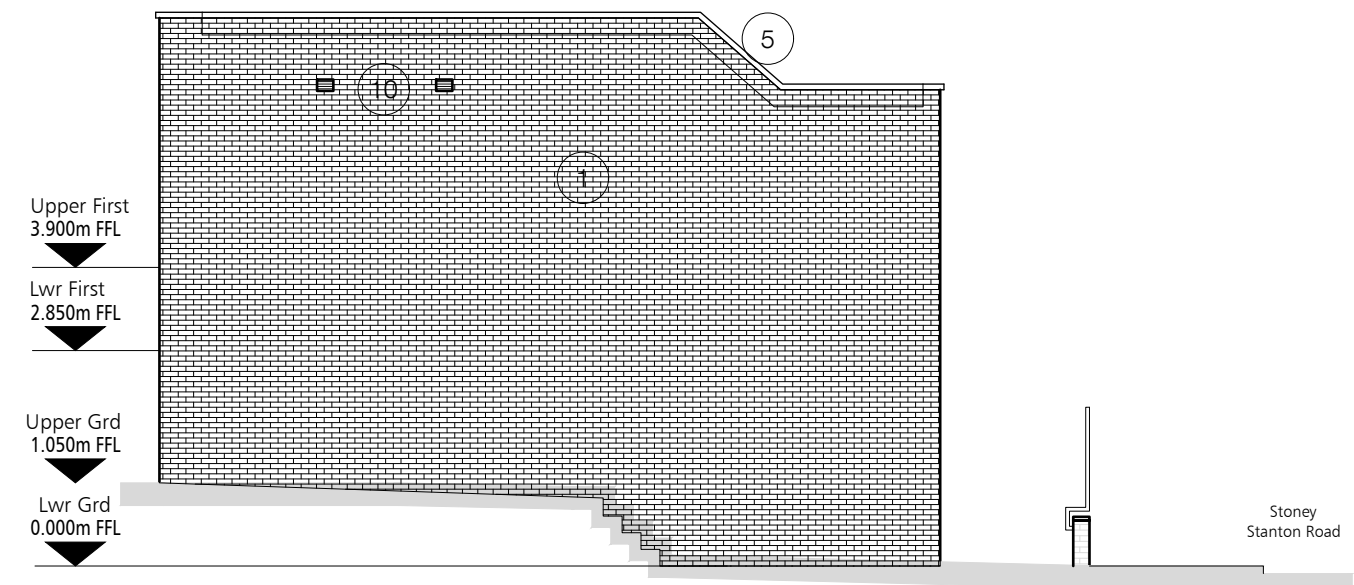


REVISIONS

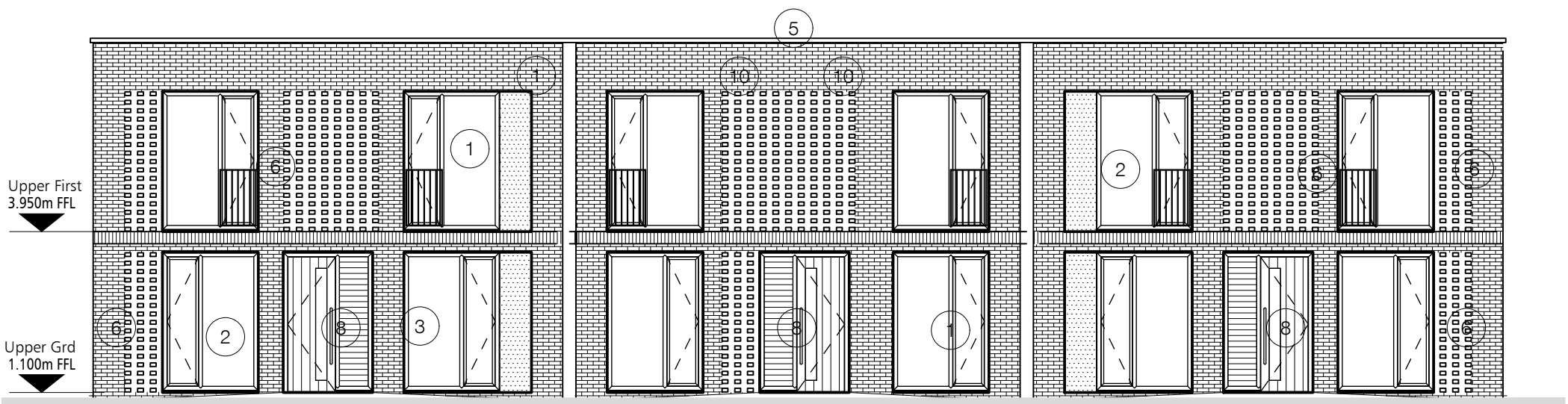
A	26/09/18	ST	SS
Sheet size amended from A3 to A2. Hopper heads added to Elevation 01. Elevation 02 amended to allow for internal cloaks.			
B	22/10/18	ST	SS
Materials schedule added. Materials key notation amended.			
C	26/10/18	ST	SS
Supply and extract vent locations added.			
D	06/11/18	LB	SS
Materials schedule updated to incorporate Air Bricks.			
E	15/02/19	WB	SS
Elevations updated in general co-ordination with plans.			
Elevations updated in line with construction information.			



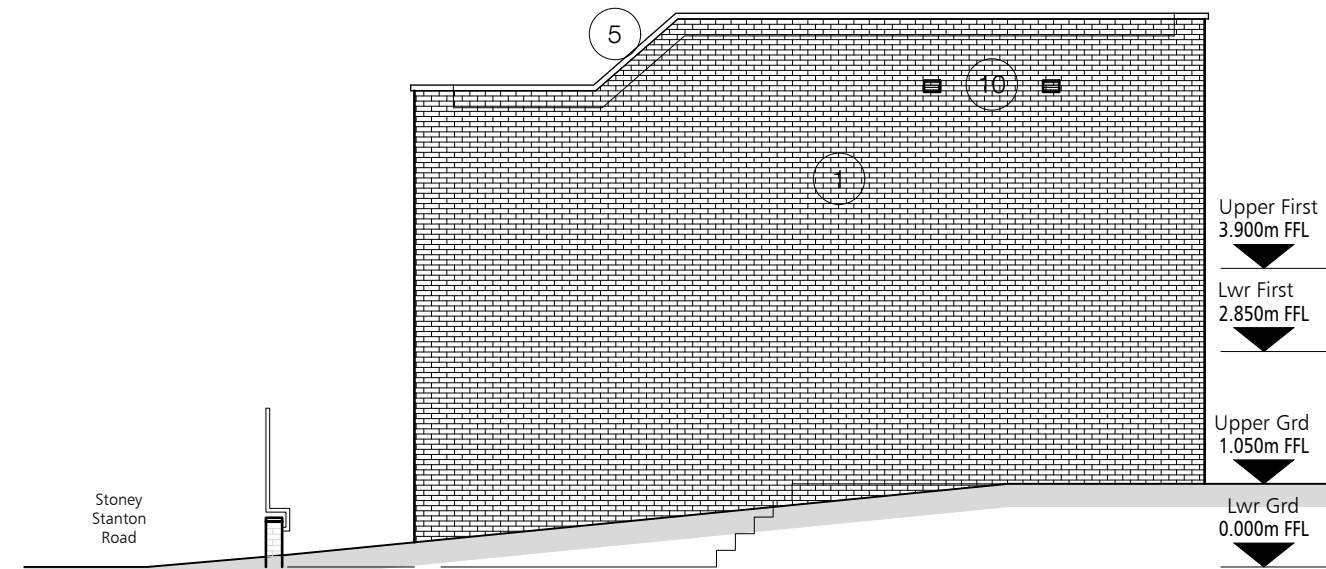
ELEVATION 01 - SOUTH EAST ELEVATION (TO STONEY STANTON ROAD)



ELEVATION 04 - SOUTH WEST ELEVATION (FACING BLOCK B)



ELEVATION 02 - NORTH WEST ELEVATION (TO COURTYARD)



ELEVATION 03 - NORTH EAST ELEVATION (FACING BLOCK A)

MATERIALS/ WORKS SCHEDULE

1. New smooth red brickwork to complement the existing brickwork on the former Nurses Accommodation Building. Brickwork to have recessed pointing, exact colour tbc.
2. UPVC aluminium look-a-like windows and doors. Opening lights to be installed, where shown. First floor windows to be fitted with metal Juliet balcony with paint finish (colour tbc).
3. Anodised aluminium rainscreen cladding. Exact colour tba.
4. Single ply with standing seam roof detail. Colour tba.
5. Aluminium coping. Colour tba.
6. Brick panel with projecting header detail to match adjacent walled brickwork and associated mortar colour.
7. New rainwater goods. Colour and specification tba.
8. New entrance doors faced in timber with vertical vision panel and adjacent inset timber panel detail.
9. Rooflights to be Velux or similar.
10. Air Bricks to suit MVHR ventilation strategy. Exact spec tbc.

NOTE

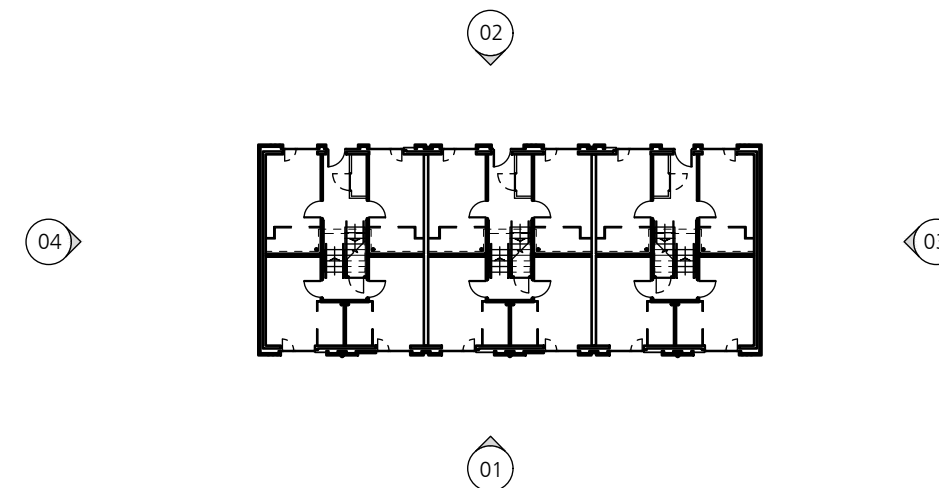
This drawing is based on the latest structural information received to date. The scheme is subject to design development, and any change to suit the structural scheme will potential have an effect on information shown on these GA's.

This drawing is subject to Local Authority Planning approval, Approved inspectors comments / approvals & associated detail design development.

Door locations and widths shown are based on assumptions to comply with building regulations. No specific client requirements have been shown, and this drawing is subject to the development and incorporation of client requirements.

The location of incoming services are to be fully resolved with the M&E consultant.

This drawing is to be read in conjunction with all relevant Structural, M&E consultant, DLA Landscape drawings & DLA 200 series drawings for GA Plans, Sections, Elevations and Fire Strategies.



ELEVATION KEY - NTS



ARCHITECTURE

No.55 | St Pauls Street | Leeds | LS1 2TE  
0113 887 3100 www.dla-design.co.uk

PROJECT  
STONEY STANTON ROAD,  
COVENTRY

TITLE  
BLOCK D PROPOSED  
ELEVATIONS

SCALE 1:100 @ A2 DATE 30/08/18

DRAWING NO. 2016-154/G234 REVIEWED SS

REVISION E

FILE PATH  
T:\2016\2016-154\CAD\05-Autocad\Drawings\General\G234

STATUS For Planning