

Signage:1 8840 X 2600mm

- Sign system called Flexface
- Constructed of aluminum box section with a Fabric Printed face
- the box sign is 220mm front to back & illuminated through the letters & line only, black background does not light up
- LED

Signage:2 6050 X 1350mm

- Sign system called Flexface
- Constructed of aluminum box section with a Fabric Printed face
- the box sign is 220mm front to back & illuminated through the letters & line only, black background does not light up
- LED

Signage:3 700 X 1400mm

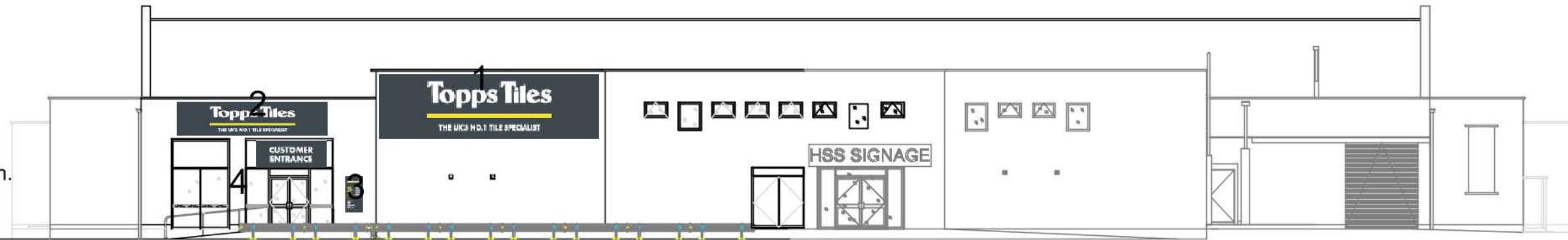
- Folded powder coated pan with vinyl graphic

Signage:4 1985 X 740mm

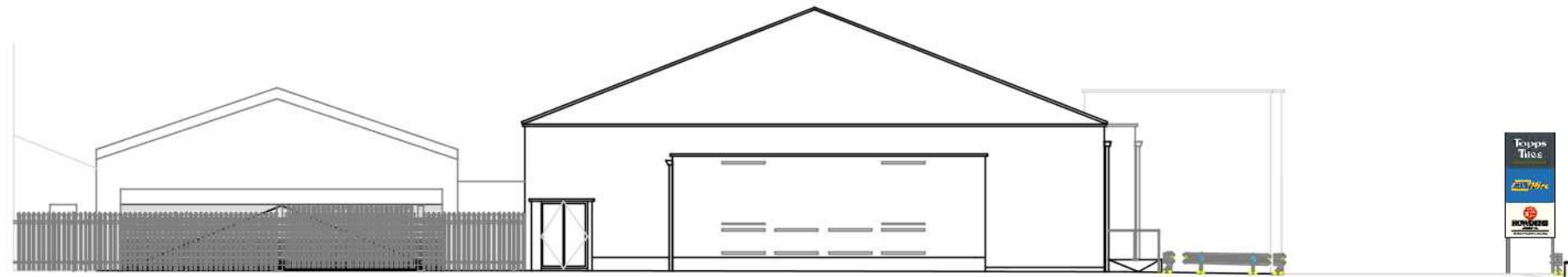
- Digital printed vinyl graphic

TOPPS TILES

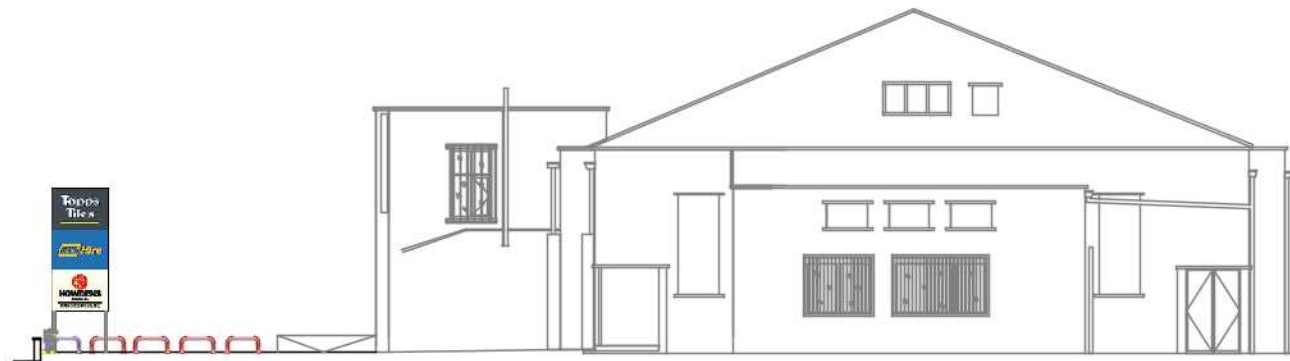
Door Signage:
Frosted manifestation.
Fitted at horizontal
door bar level



East Elevation



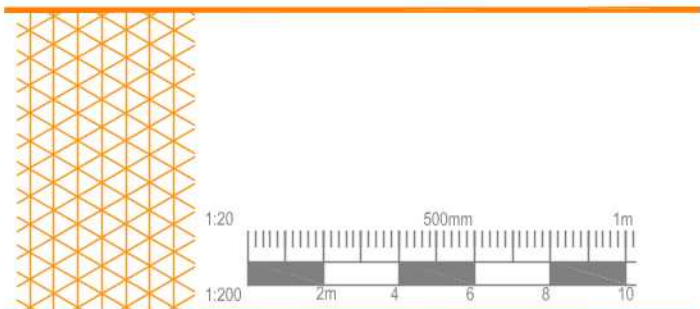
South Elevation



North Elevation

Totem Signage:Double sided

- Folded powder coated pans sleeved over square posts
- Logos to be fret cut pushed through acrylic.
- Internal white LED.
- Logos to illuminate only



Revision	Description	Date
A	Minor alteration to elevation annotation	27/02/19
B	North Elevation added to the drawing	05/03/19

Do not scale from this drawing. All dimensions, levels and such like are to be checked on site by the Contractor prior to preparation of shop drawings / commencement of work on site.

This drawing is to be read in conjunction with all relevant Consultant's and / or Specialist's drawings / documents, and any discrepancies or variations are to be notified to Jones Melling before the affected work commences.

This drawing and the copyrights and patents therein are the property of Jones Melling and may not be used or reproduced without consent.

Client Topps Tiles	Project Measured Survey
Address Fletchamstead Highway, Tile Hill, Coventry	Purpose of Issue Proposed Signage Elevations
Scale 1:200 @ A3	Title Planning
Drawn By DS	Checked By GM
Job No. 19.3012	Date 19/02/19
	Drawing No. 19.3012-P03
	Revision B

JONES MELLING

Preston Office
The Chambers
53 Guildhall Street
Preston
PR1 3NU

Cheshire Office
47 Watgate
Row South
Chester
CH1 2LE

London Office
3 Rosemont Road
Hampstead
London
NW3 6NG

T:01772 301 982 T:01244 637 741 T:02071 110 961
E: info@jonesmelling.co.uk W: www.jonesmelling.co.uk