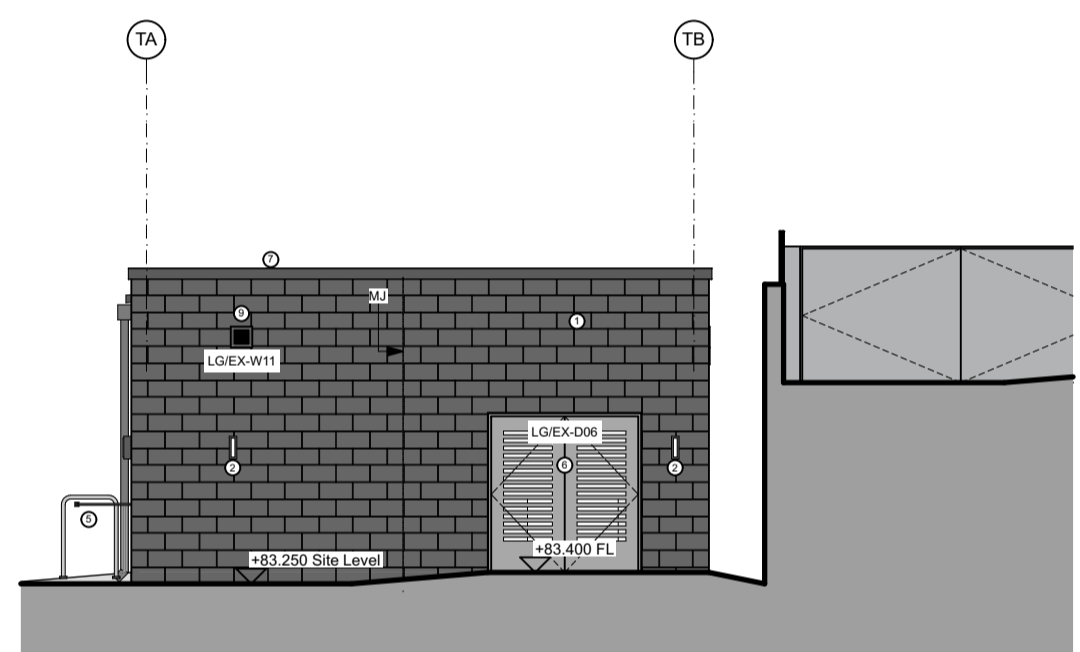
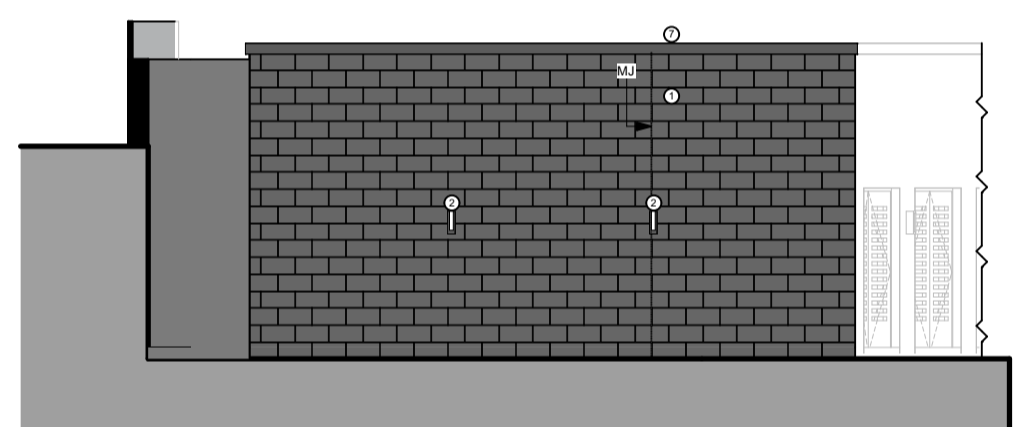


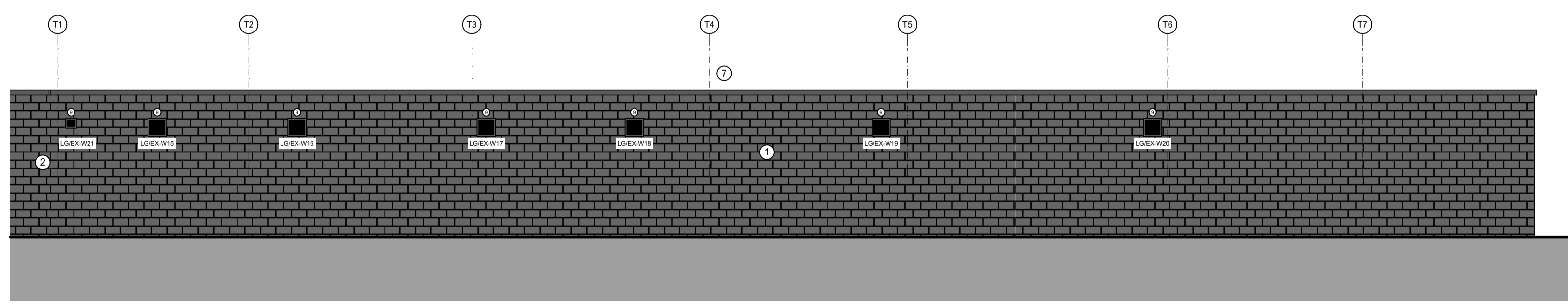
ELEVATION AA



ELEVATION BB

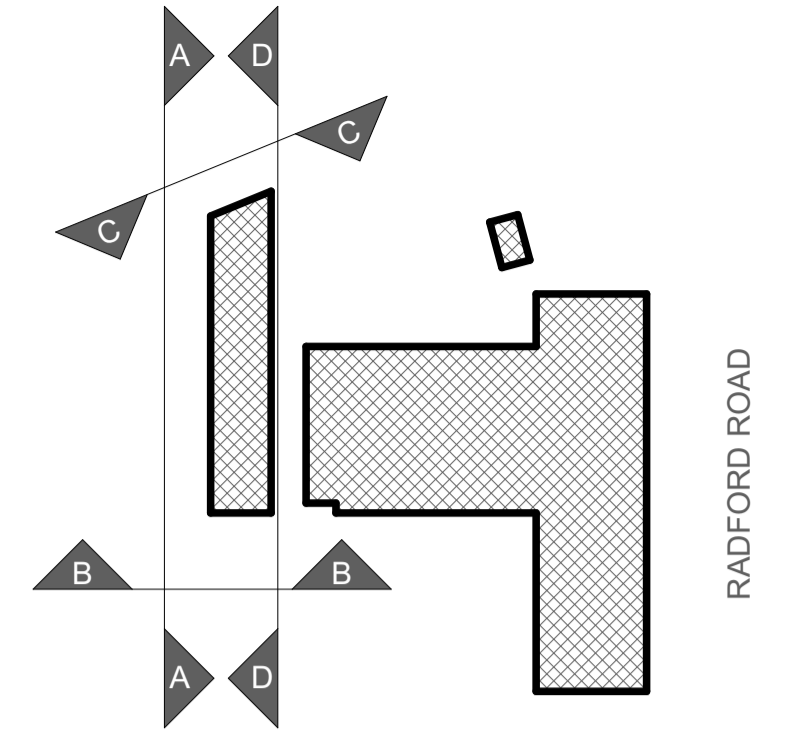


ELEVATION CC



ELEVATION DD

key plan

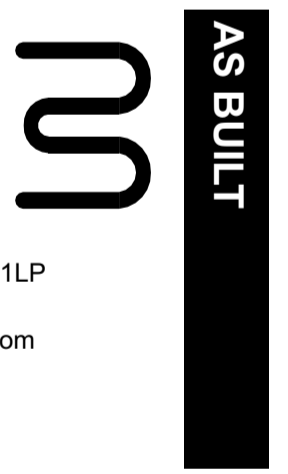


notes

- Key to Materials**
1. Facing blockwork (Forticrete Pewter) - NBS F10/356
 2. Indicative of proposed lighting strategy
 3. Glazing in polyester powder coated aluminium frames (Anthracite grey RAL 7016) - NBS H11/119
 4. Glazed external doors in polyester powder coated aluminium frames (Anthracite grey RAL 7016) - NBS H11/224
 5. Galvanised metal pedestrian protection hoops at door location
 6. PPC Aluminium louvred external doors (Anthracite grey RAL 7016) - NBS L20/616
 7. Polyester powder coated aluminium coping to building parapet (Anthracite grey RAL 7016) - NBS H72/420
 8. Polycarbonate Roof Lights - NBS H43/155
 9. Circular ventilation diffuser
 10. Steel gully rainwater head and downpipe (Black - RAL 9011) NBS R10/110

PL0	Issued for planning approval	RS	MD	15.02.19
rev	description	drawn	checked	date

Bond Bryan Architects



The Church Studio Springvale Road Sheffield S10 1LP
 t +44(0)114 266 2040 w www.bondbryan.com
 f +44(0)114 268 7021 tw @bondbryan
 e projectemail@bondbryan.co.uk

**West Midlands Fire Service
 Radford Road
 Coventry Fire House**

West Midlands Fire and Rescue Authority

EXISTING GA ELEVATIONS - TRAINING BUILDING

bba project ref	scale(s)	original paper size
18-198	1:100	A1

project	originator	zone	level	type	role	number
---------	------------	------	-------	------	------	--------

CFH - BBA - ZZ - ZZ - DR - A - 03002

status : suitability description :
D5 ISSUED FOR INFORMATION
 revision : revision description :
PL0 PLANNING

This document is © Bond Bryan Architects Ltd. If in doubt ASK. Drawing measurements shall not be obtained by scaling. Verify all dimensions prior to construction. Immediately report any discrepancies on this document to the Architect. This document shall be read in conjunction with associated models, specifications and related consultant's documents.