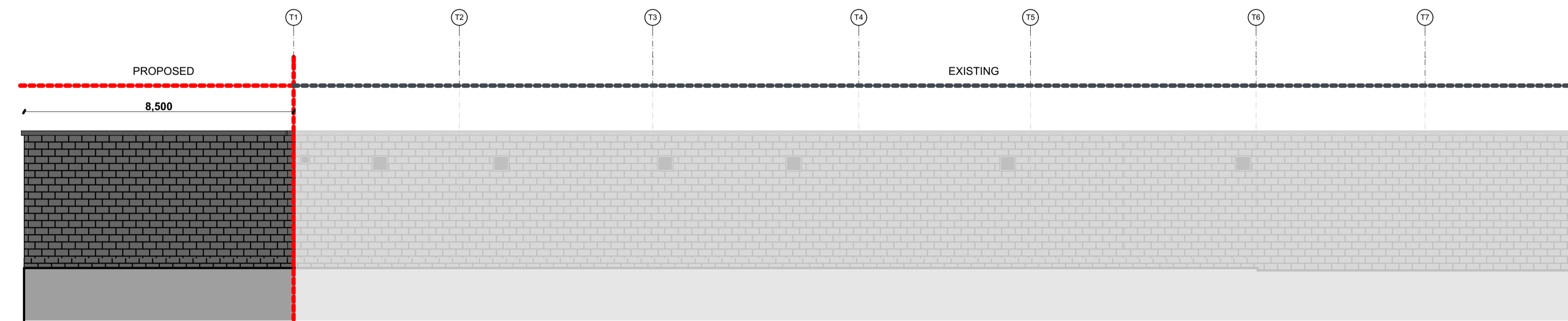


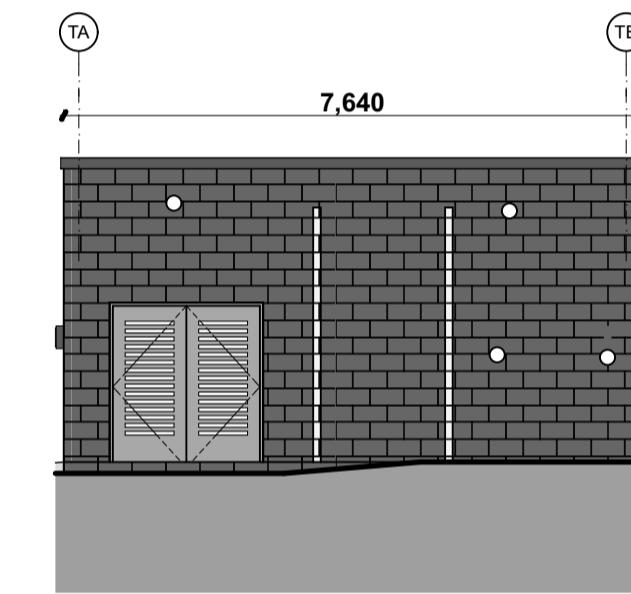
Elevation A:A

1:100



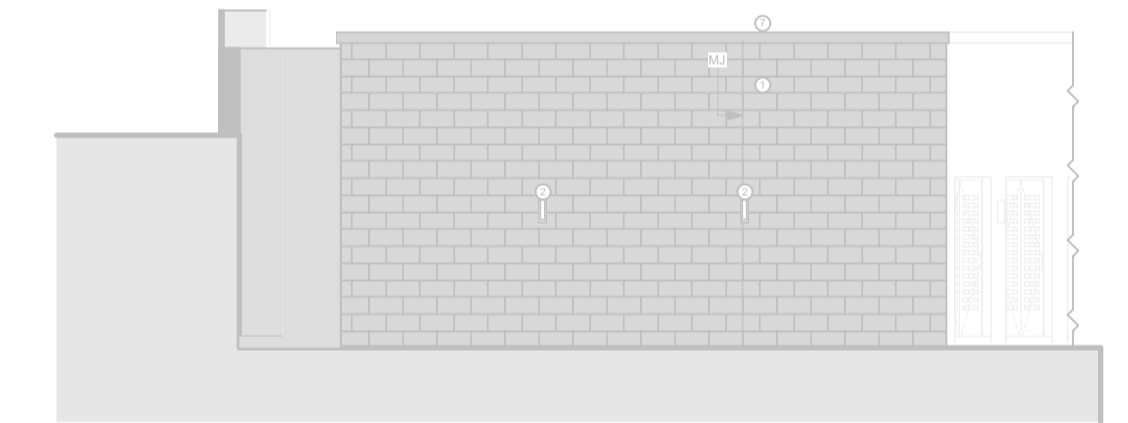
ELEVATION D:D

1:100



ELEVATION B:B

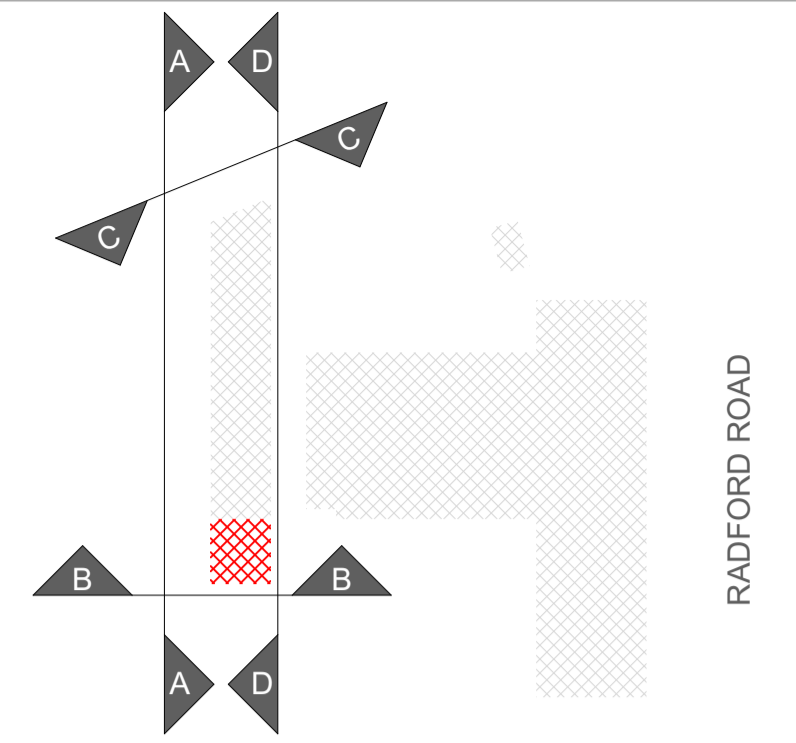
1:100



Elevation C:C

1:100

key plan



notes

Key to Materials

1. Facing blockwork (Forticrete Pewter) - NBS F10/356
2. PPC Aluminium louvred external doors (Anthracite grey RAL 7016) - NBS L20/616

External materials Palette : Materials to match existing training building.

Fairface



Walls: Forticrete architectural masonry  
Fairfaced concrete block: Pewter



Roof: Sarnafil G410-15EL Lacquered Reinforced  
PVC membrane. Colour: Light Grey



Door: PPC Aluminium louvred external doors  
(Anthracite grey RAL 7016)

PL0 Issued for planning approval RS MD 15.02.19

rev	description	drawn	checked	date

Bond Bryan Architects



PRELIMINARY

The Church Studio Springvale Road Sheffield S10 1LP

t +44(0)114 266 2040 w www.bondbryan.com  
f +44(0)114 268 7021 @bondbryan  
e projectemail@bondbryan.co.uk

West Midlands Fire Service  
Radford Road  
Coventry Fire House

West Midlands Fire and Rescue Authority

PROPOSED GA ELEVATIONS - TRAINING BUILDING REFURBISHMENT

bba project ref	scale(s)	original paper size
18-198	1:100, 1:1, 1:2.33	A1

project	originator	zone	level	type	role	number
CFH	BBA	ZZ	ZZ	DR	A	03003

status : suitability description :  
**D5 ISSUED FOR INFORMATION**

revision : revision description :  
**PL0 PLANNING**

This document is © Bond Bryan Architects Ltd. If in doubt ASK. Drawing measurements shall not be obtained by scaling. Verify all dimensions prior to construction. Immediately report any discrepancies on this document to the Architect. This document shall be read in conjunction with associated models, specifications and related consultant's documents.