

NOTE

This drawings is based on the latest structural information received to date. The scheme is subject to design development, and any change to suit the structural scheme will potential have an effect on information shown on these GA's.

This drawing is subject to Local Authority Planning approval, Approved inspectors comments / approvals & associated detail design development.

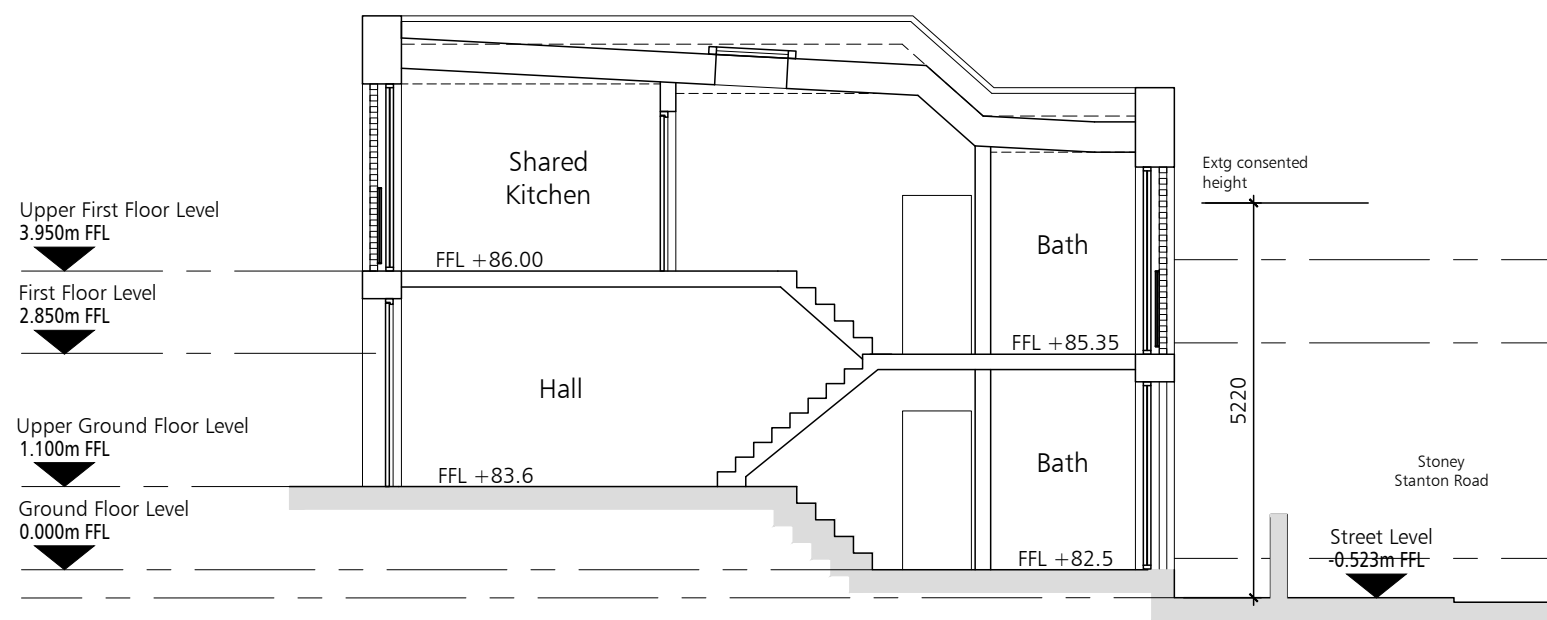
Door locations and widths shown are based on assumptions to comply with building regulations. No specific client requirements have been shown, and this drawing is subject to the development and incorporation of client requirements.

The location of incoming services are to be fully resolved with the M&E consultant.

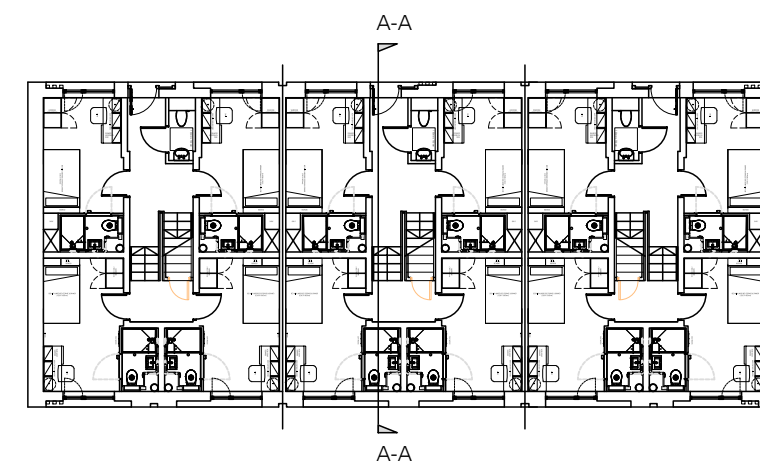
This drawing is to be read in conjunction with all relevant Structural, M&E consultant, DLA Landscape drawings & DLA 200 series drawings for GA Plans, Sections, Elevations and Fire Strategies.

REVISIONS

REVISIONS	DATE	BY	CHKD
A	26/09/18	ST	SS
Rooflight added to stairwell. Roof pitch amended. Dwg scale updated to 1:100.			
B	04/10/18	ST	SS
External levels updated in line with site levels plan.			
C	06/11/18	LB	SS
Generally updated to suit latest scheme.			



SECTION A-A



SECTION KEY - NTS



ARCHITECTURE

No.55 | St Pauls Street | Leeds | LS1 2TE
0113 887 3100 www.dla-design.co.uk

PROJECT
STONEY STANTON ROAD
COVENTRY

TITLE
BLOCK D PROPOSED
SECTIONS

SCALE
1:100 @ A3

DATE
30/08/18

DRAWN
ST

REVIEWED
SS

DLA REF
2016-154/G235

NUMBER
C

REVISION

FILE PATH
T:\2016\2016-154\CAD\05-Autocad\Drawings\G235

STATUS
For Planning