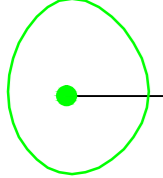
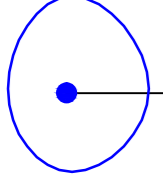
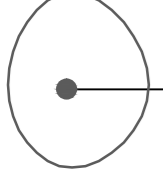
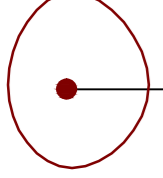
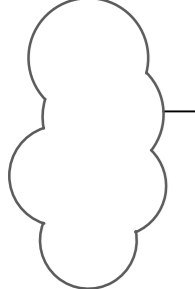


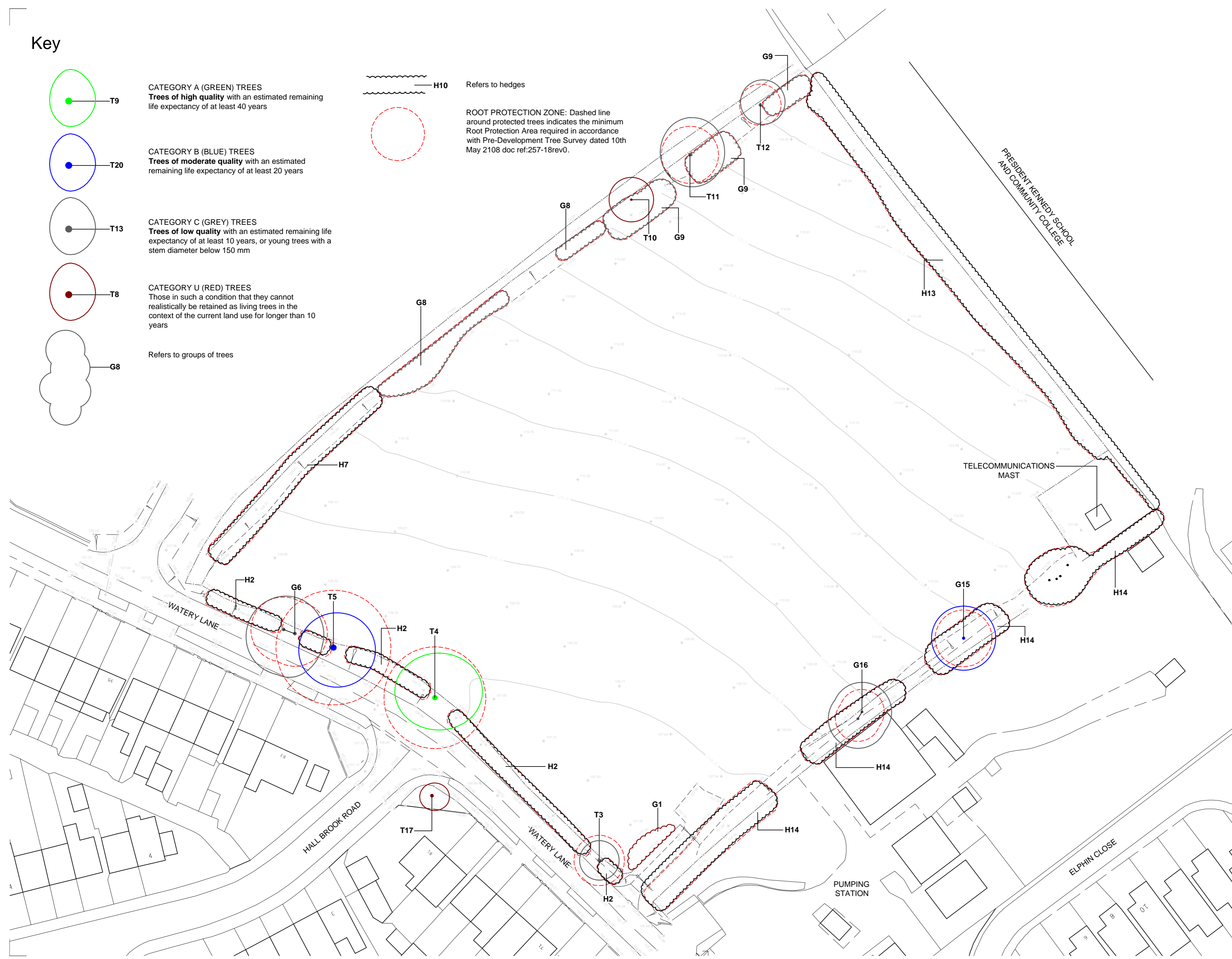


Key

-  T9
CATEGORY A (GREEN) TREES
Trees of high quality with an estimated remaining life expectancy of at least 40 years
-  T20
CATEGORY B (BLUE) TREES
Trees of moderate quality with an estimated remaining life expectancy of at least 20 years
-  T13
CATEGORY C (GREY) TREES
Trees of low quality with an estimated remaining life expectancy of at least 10 years, or young trees with a stem diameter below 150 mm
-  T8
CATEGORY U (RED) TREES
Those in such a condition that they cannot realistically be retained as living trees in the context of the current land use for longer than 10 years
-  G8
Refers to groups of trees

 H10 Refers to hedges

 ROOT PROTECTION ZONE: Dashed line around protected trees indicates the minimum Root Protection Area required in accordance with Pre-Development Tree Survey dated 10th May 2108 doc ref:257-18rev0.

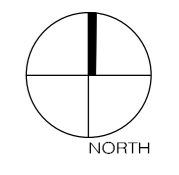


NOTES

REFER TO BEN BENNETT TREE AND WOODLAND CONSULTANCY 'PRE-DEVELOPMENT TREE SURVEY' DATED 10TH MAY 2018 DOC REF:257-18rev0 FOR DETAILS OF EXISTING TREES.

TREE LOCATIONS SHOWN ARE BASED ON INFORMATION PROVIDED BY GREENHATCH GROUP.

THIS DRAWING HAS BEEN PREPARED IN ACCORDANCE WITH BS5837:2012.



A. Amendment to clients name. 03/10/18 MGO
REV NOTE DATE AUTH



CLIENT
J G GRAY LTD
GILLITT PROPERTIES LTD
THE NEWCOMBE ESTATES COMPANY LTD

PROJECT
ROOKERY FARM,
WATERY LANE, COVENTRY,

DRAWING
TREE CONSTRAINTS PLAN

CONTRACT	1856/18	DRG NO.	01
DATE	17/05/18	DRAWN	
ISSUE	PLANNING	CHECKED	DR
SCALE	1:500	ORG SHEET	A2
CAD FILE	1856-18_01A_Tree Constraints Plan.dwg	REV	A